

# SFRS6 antibody



Catalog Number: 115151

## Product name

SFRS6 antibody

## Specificity

Human, Mouse, Rat; other species not tested.

## Antibody description

SFRS6 Rabbit Polyclonal antibody. Positive WB detected in rat kidney tissue, HeLa cells. Observed molecular weight by Western-blot: 55 kDa

## Preparation

This antibody was obtained by immunization of SFRS6 recombinant protein (Accession Number: NM\_006275). Purification method: Antigen affinity purified.

## Formulation

PBS with 0.1% sodium azide and 50% glycerol pH 7.3.

## Storage

Store at -20°C. DO NOT ALIQUOT

## Clonality

Polyclonal

## Ig Type

Rabbit IgG

## Applications

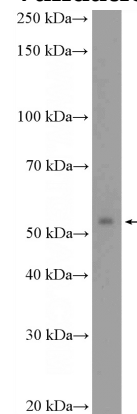
ELISA, WB

## Dilutions

Recommended Dilution:

WB: 1:200-1:2000

## Validations



rat kidney tissue were subjected to SDS PAGE followed by western blot with Catalog No:115151(SFRS6 Antibody) at dilution of 1:600