

# SFRS17A antibody

Catalog Number: 115148

## Product name

SFRS17A antibody

WB: 1:500-1:5000

IP: 1:200-1:2000

## Specificity

Human; other species not tested.

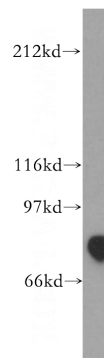
IHC: 1:20-1:200

IF: 1:10-1:100

## Antibody description

SFRS17A Rabbit Polyclonal antibody. Positive IF detected in HT-1080 cells. Positive IHC detected in human pancreas cancer tissue. Positive WB detected in human kidney tissue, human heart tissue. Positive IP detected in Jurkat cells. Observed molecular weight by Western-blot: 81 kDa

## Validations



## Preparation

This antibody was obtained by immunization of SFRS17A recombinant protein (Accession Number: BC028151). Purification method: Antigen affinity purified.

human kidney tissue were subjected to SDS PAGE followed by western blot with Catalog No:115148(SFRS17A antibody) at dilution of 1:400

## Formulation

PBS with 0.02% sodium azide and 50% glycerol pH 7.3.

## Storage

Store at -20°C. DO NOT ALIQUOT

## Clonality

Polyclonal

## Ig Type

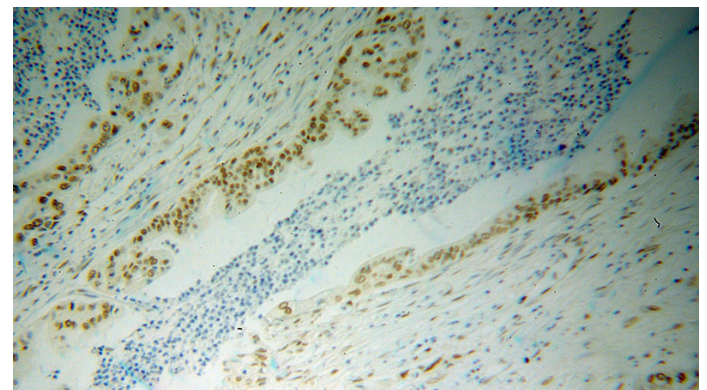
Rabbit IgG

## Applications

ELISA, WB, IHC, IF, IP

## Dilutions

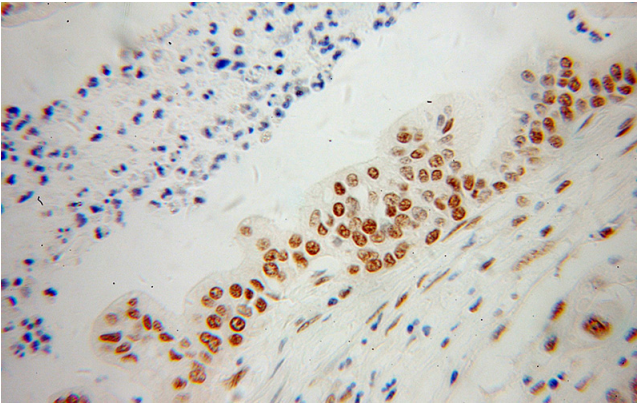
Recommended Dilution:



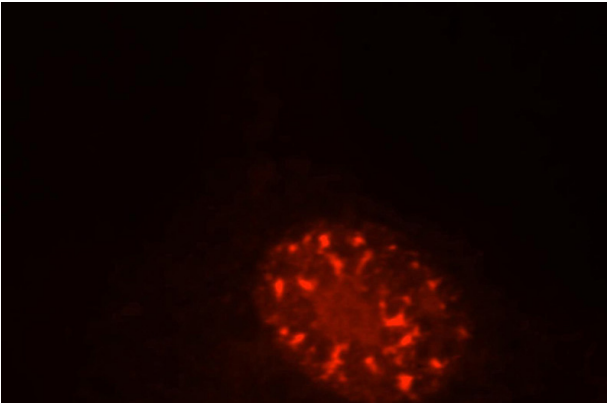
Immunohistochemical of paraffin-embedded human pancreas cancer using Catalog No:115148(SFRS17A antibody) at dilution of 1:100 (under 10x lens)

# SFRS17A antibody

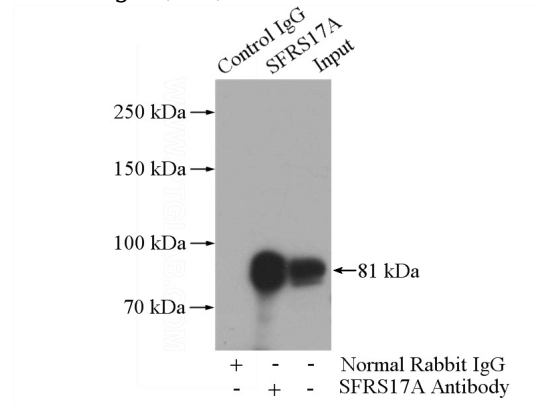
Catalog Number: 115148



Immunohistochemical of paraffin-embedded human pancreas cancer using Catalog No:115148(SFRS17A antibody) at dilution of 1:100 (under 40x lens)



Immunofluorescent analysis of HT1080 cells, using SFRS17A antibody Catalog No:115148 at 1:25 dilution and Rhodamine-labeled goat anti-rabbit IgG (red).



IP Result of anti-SFRS17A (IP:Catalog No:115148, 4ug; Detection:Catalog No:115148 1:500) with Jurkat cells lysate 2800ug.