

SFRP4 antibody

Catalog Number: 115146

Product name

SFRP4 antibody

IP: 1:200-1:2000

IHC: 1:50-1:500

Specificity

Human; other species not tested.

Antibody description

SFRP4 Rabbit Polyclonal antibody. Positive WB detected in HEK-293 cells, HeLa cells. Positive IP detected in HeLa cells. Positive IHC detected in human cervical cancer tissue, human breast cancer tissue. Observed molecular weight by Western-blot: 41-51 kDa; 55 kDa

Preparation

This antibody was obtained by immunization of SFRP4 recombinant protein (Accession Number: NM_003014). Purification method: Antigen affinity purified.

Formulation

PBS with 0.02% sodium azide and 50% glycerol pH 7.3.

Storage

Store at -20°C. DO NOT ALIQUOT

Clonality

Polyclonal

Ig Type

Rabbit IgG

Applications

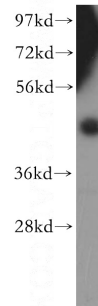
ELISA, WB, IP, IHC

Dilutions

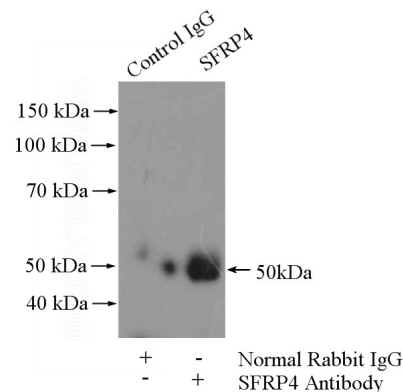
Recommended Dilution:

WB: 1:500-1:5000

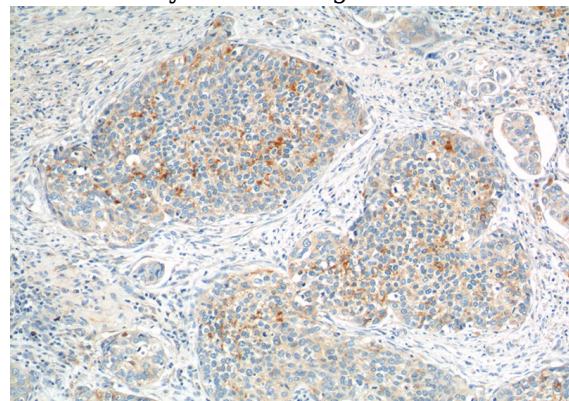
Validations



HEK-293 cells were subjected to SDS PAGE followed by western blot with Catalog No:115146(SFRP4 antibody) at dilution of 1:400



IP Result of anti-SFRP4 (IP:Catalog No:115146, 4ug; Detection:Catalog No:115146 1:500) with HeLa cells lysate 2000ug.

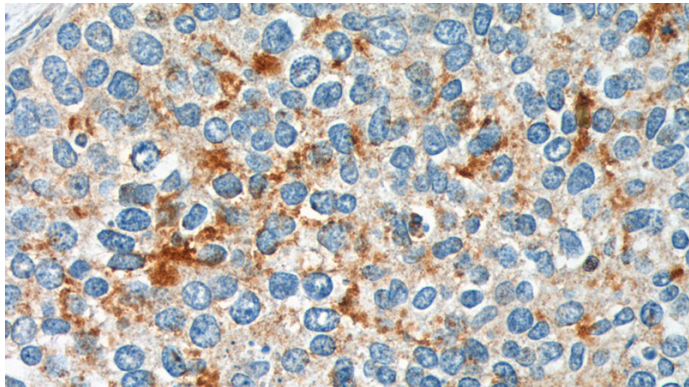


Immunohistochemistry of paraffin-embedded human cervical cancer tissue slide using Catalog

SFRP4 antibody

Catalog Number: 115146

No:115146(SFRP4 Antibody) at dilution of 1:200
(under 10x lens).



Immunohistochemistry of paraffin-embedded
human cervical cancer tissue slide using Catalog
No:115146(SFRP4 Antibody) at dilution of 1:200
(under 40x lens).