

SF3B4 antibody

Catalog Number: 115139

Product name

SF3B4 antibody

IP: 1:200-1:2000

IHC: 1:20-1:200

Specificity

Human, Mouse, Rat; other species not tested.

Antibody description

SF3B4 Rabbit Polyclonal antibody. Positive IP detected in HeLa cells. Positive WB detected in HeLa cells, HEK-293 cells, PC-3 cells. Positive IHC detected in human pancreas cancer tissue. Observed molecular weight by Western-blot: 55 kDa

Preparation

This antibody was obtained by immunization of SF3B4 recombinant protein (Accession Number: NM_005850). Purification method: Antigen affinity purified.

Formulation

PBS with 0.1% sodium azide and 50% glycerol pH 7.3.

Storage

Store at -20°C. DO NOT ALIQUOT

Clonality

Polyclonal

Ig Type

Rabbit IgG

Applications

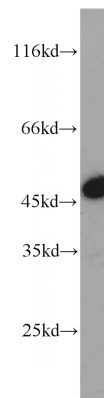
ELISA, WB, IHC, IP

Dilutions

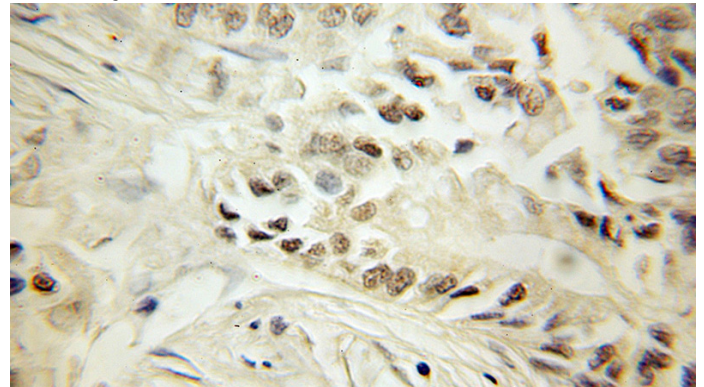
Recommended Dilution:

WB: 1:200-1:2000

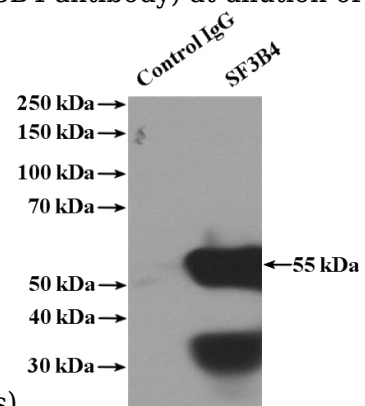
Validations



HeLa cells were subjected to SDS PAGE followed by western blot with Catalog No:115139(SF3B4 antibody) at dilution of 1:500



Immunohistochemical of paraffin-embedded human pancreas cancer using Catalog No:115139(SF3B4 antibody) at dilution of 1:50



(under 10x lens)

IP Result of anti-SF3B4 (IP:Catalog No:115139, 4ug; Detection:Catalog No:115139 1:500) with

SF3B4 antibody



Catalog Number: 115139

HeLa cells lysate 1600ug.