

SERF2 antibody

Catalog Number: 115128

Product name

SERF2 antibody

IP: 1:200-1:2000

IF: 1:10-1:100

Specificity

Human; other species not tested.

Antibody description

SERF2 Rabbit Polyclonal antibody. Positive IF detected in HepG2 cells. Positive IP detected in HepG2 cells. Positive WB detected in HepG2 cells, human adrenal gland tissue. Observed molecular weight by Western-blot: 7 kDa

Preparation

This antibody was obtained by immunization of SERF2 recombinant protein (Accession Number: NM_001199877). Purification method: Antigen affinity purified.

Formulation

PBS with 0.02% sodium azide and 50% glycerol pH 7.3.

Storage

Store at -20°C. DO NOT ALIQUOT

Clonality

Polyclonal

Ig Type

Rabbit IgG

Applications

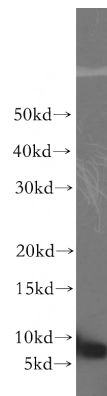
ELISA, WB, IF, IP

Dilutions

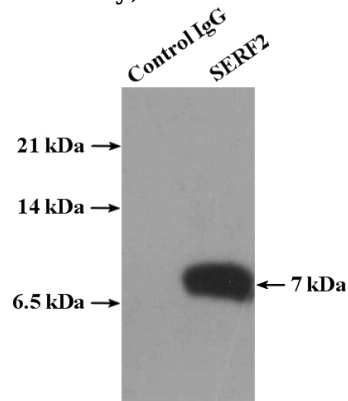
Recommended Dilution:

WB: 1:500-1:5000

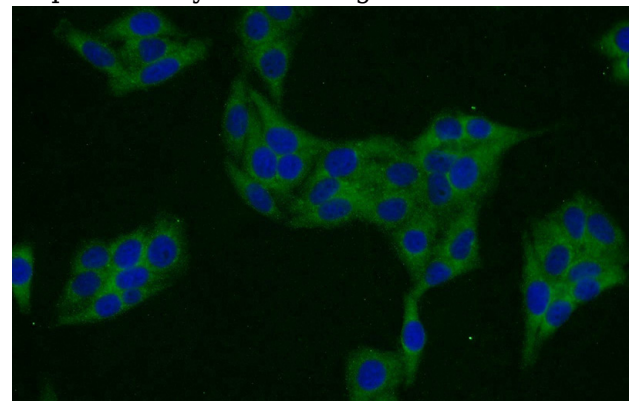
Validations



HepG2 cells were subjected to SDS PAGE followed by western blot with Catalog No:115128(SERF2 antibody) at dilution of 1:500



IP Result of anti-SERF2 (IP:Catalog No:115128, 4ug; Detection:Catalog No:115128 1:500) with HepG2 cells lysate 4000ug.



Immunofluorescent analysis of HepG2 cells using Catalog No:115128(SERF2 Antibody) at dilution of

SERF2 antibody



Catalog Number: 115128

1:25 and Alexa Fluor 488-conjugated AffiniPure

Goat Anti-Rabbit IgG(H+L)