

# SERAC1 antibody

Catalog Number: 115125

## Product name

SERAC1 antibody

IHC: 1:20-1:200

IF: 1:20-1:200

## Specificity

Human, Mouse; other species not tested.

## Antibody description

SERAC1 Rabbit Polyclonal antibody. Positive WB detected in mouse brain tissue, HEK-293 cells, HeLa cells. Positive IF detected in HepG2 cells. Positive IHC detected in human colon tissue. Observed molecular weight by Western-blot: 70-75 kDa

## Preparation

This antibody was obtained by immunization of SERAC1 recombinant protein (Accession Number: NM\_032861). Purification method: Antigen affinity purified.

## Formulation

PBS with 0.1% sodium azide and 50% glycerol pH 7.3.

## Storage

Store at -20°C. DO NOT ALIQUOT

## Clonality

Polyclonal

## Ig Type

Rabbit IgG

## Applications

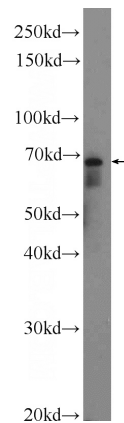
ELISA, WB, IHC, IF

## Dilutions

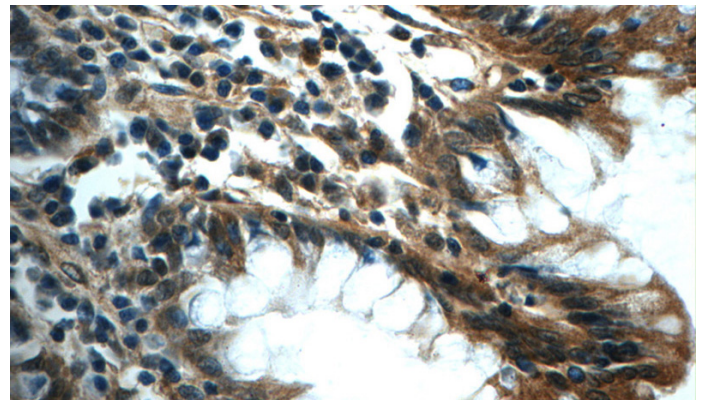
Recommended Dilution:

WB: 1:500-1:5000

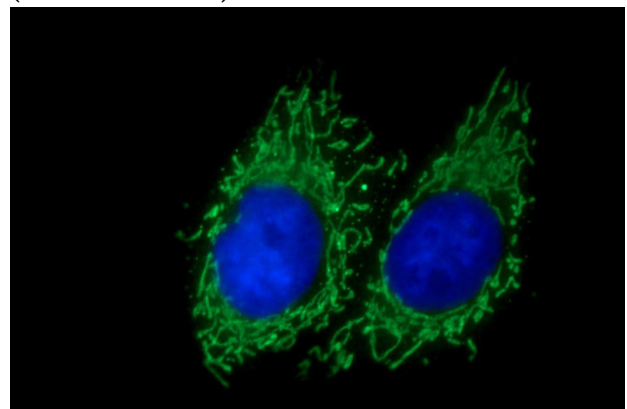
## Validations



mouse brain tissue were subjected to SDS PAGE followed by western blot with Catalog No:115125(SERAC1 Antibody) at dilution of 1:1000



Immunohistochemistry of paraffin-embedded human colon tissue slide using Catalog No:115125(SERAC1 Antibody) at dilution of 1:50 (under 40x lens)



# SERAC1 antibody



Catalog Number: 115125

---

Immunofluorescent analysis of HepG2 cells using  
Catalog No:115125(SERAC1 Antibody) at dilution

of 1:50 and Alexa Fluor 488-conjugated AffiniPure  
Goat Anti-Rabbit IgG(H+L)