

SEPT2 antibody



Catalog Number: 115117

Product name

SEPT2 antibody

Specificity

Human, Mouse, Rat; other species not tested.

Antibody description

SEPT2 Rabbit Polyclonal antibody. Positive WB detected in HeLa cells, C6 cells, human skeletal muscle tissue, Jurkat cells, K-562 cells, mouse brain tissue, mouse heart tissue, mouse testis tissue, rat brain tissue. Positive IP detected in mouse brain tissue. Positive FC detected in MCF-7 cells. Positive IF detected in HepG2 cells, hTERT-RPE1 cells and Mouse embryonic fibroblasts. Positive IHC detected in human pancreas cancer tissue, human liver cancer tissue. Observed molecular weight by Western-blot: 45 kDa

Preparation

This antibody was obtained by immunization of SEPT2 recombinant protein (Accession Number: NM_001008492). Purification method: Antigen affinity purified.

Formulation

PBS with 0.1% sodium azide and 50% glycerol pH 7.3.

Storage

Store at -20°C. DO NOT ALIQUOT

Clonality

Polyclonal

Ig Type

Rabbit IgG

Applications

ELISA, IHC, IP, IF, WB, FC

Dilutions

Recommended Dilution:

WB: 1:500-1:5000

IP: 1:500-1:5000

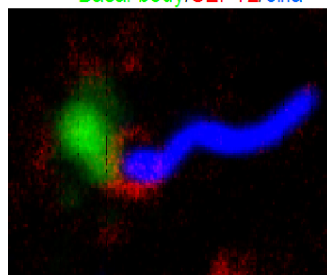
IHC: 1:20-1:200

IF: 1:20-1:200

Validations

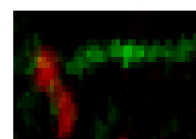
SEPTIN2 marks the transition zone and cilium

Basal body/SEPT2/cilia



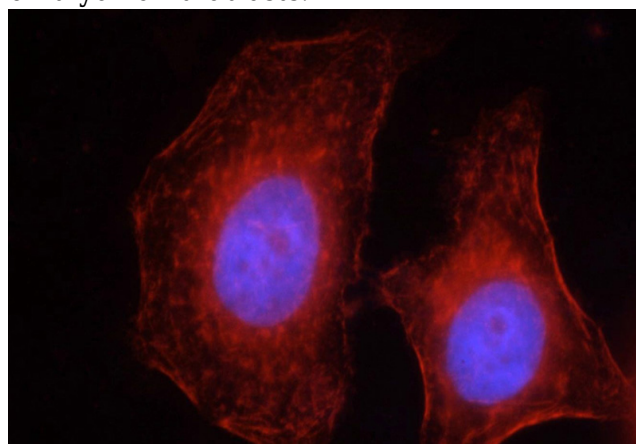
Mouse embryonic fibroblasts

Basal body/SEPT2



Human hTERT-RPE1 cells

IF result from Dr. Kevin Corbit. SEPT2 (Catalog No: 115117) marks the transition zone and cilium of Human hTERT-RPE1 cells and Mouse embryonic fibroblasts.

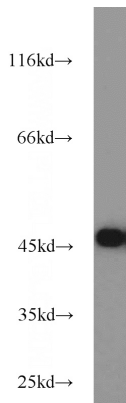


Immunofluorescent analysis of HepG2 cells, using SEPT2 antibody 113971-AP at 1:50 dilution and Rhodamine-labeled goat anti-rabbit IgG (red). Blue pseudocolor = DAPI (fluorescent DNA dye).

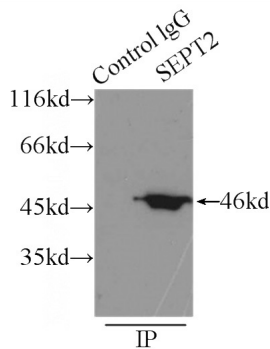
SEPT2 antibody



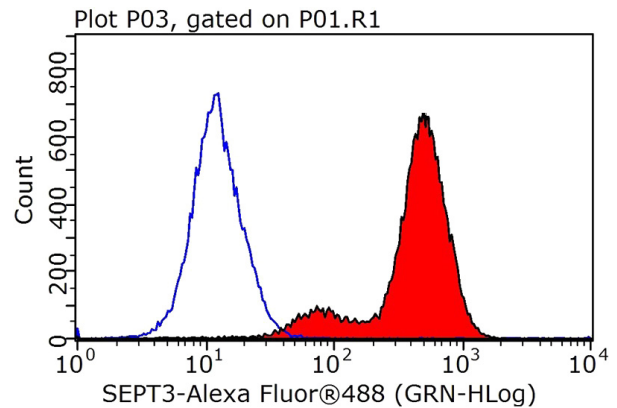
Catalog Number: 115117



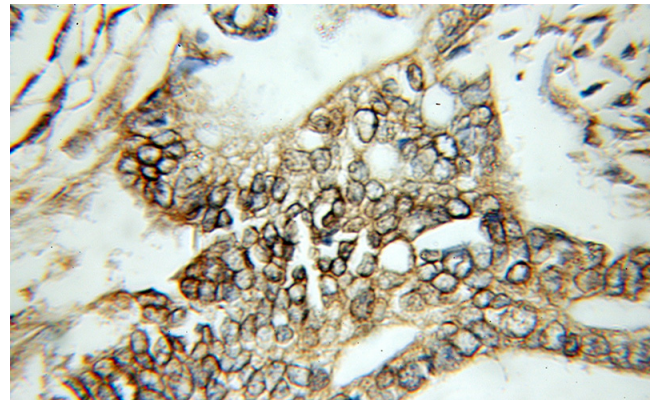
HeLa cells were subjected to SDS PAGE followed by western blot with Catalog No:115117(SEPT2 antibody) at dilution of 1:1000



IP Result of anti-SEPT2 (IP:Catalog No:115117, 3ug; Detection:Catalog No:115117 1:1000) with mouse brain tissue lysate 5000ug.



1X10⁶ MCF-7 cells were stained with 0.2ug SEPT2 antibody (Catalog No:115117, red) and control antibody (blue). Fixed with 90% MeOH blocked with 3% BSA (30 min). Alexa Fluor 488-conjugated AffiniPure Goat Anti-Rabbit IgG(H+L) with dilution 1:1000.



Immunohistochemical of paraffin-embedded human pancreas cancer using Catalog No:115117(SEPT2 antibody) at dilution of 1:50 (under 10x lens)