

SEPN1 antibody

Catalog Number: 115112

Product name

SEPN1 antibody

Specificity

Human, Mouse; other species not tested.

Antibody description

SEPN1 Rabbit Polyclonal antibody. Positive IHC detected in human stomach tissue, human heart tissue, human skeletal muscle tissue. Positive WB detected in A549 cells. Observed molecular weight by Western-blot: 70 kDa

Preparation

This antibody was obtained by immunization of Peptide (Accession Number: NM_020451). Purification method: Antigen affinity purified.

Formulation

PBS with 0.02% sodium azide and 50% glycerol pH 7.3.

Storage

Store at -20°C. DO NOT ALIQUOT

Clonality

Polyclonal

Ig Type

Rabbit IgG

Applications

ELISA, WB, IHC

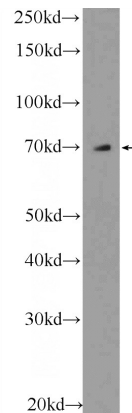
Dilutions

Recommended Dilution:

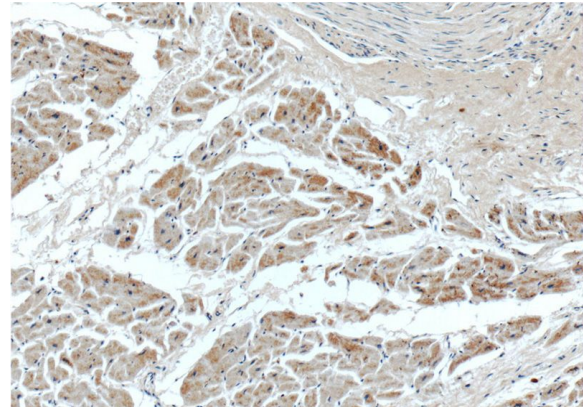
WB: 1:200-1:1000

IHC: 1:20-1:200

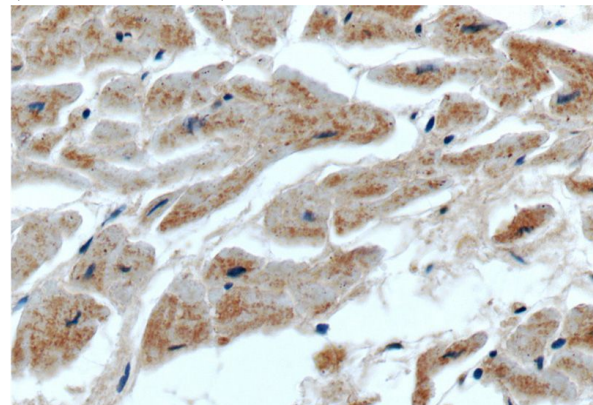
Validations



A549 cells were subjected to SDS PAGE followed by western blot with Catalog No:115112(SEPN1 Antibody) at dilution of 1:300



Immunohistochemistry of paraffin-embedded human heart tissue slide using Catalog No:115112(SEPN1 Antibody) at dilution of 1:50 (under 10x lens)

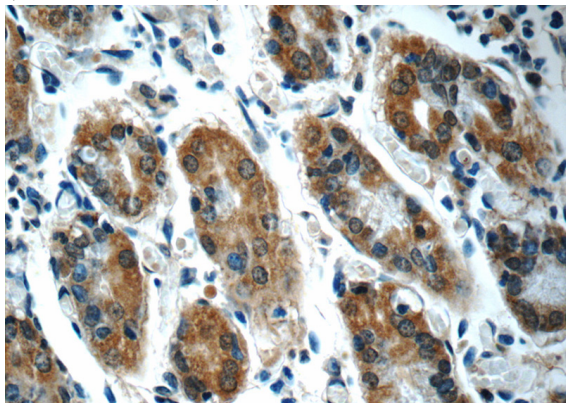


Immunohistochemistry of paraffin-embedded human heart tissue slide using Catalog No:115112(SEPN1 Antibody) at dilution of 1:50 (under 40x lens)

SEPN1 antibody

Catalog Number: 115112

Immunohistochemistry of paraffin-embedded human stomach tissue slide using Catalog No:115112(SEPN1 Antibody) at dilution of 1:50 (under 10x lens)



Immunohistochemistry of paraffin-embedded human stomach tissue slide using Catalog No:115112(SEPN1 Antibody) at dilution of 1:50 (under 40x lens)