

# SEMA4F antibody



Catalog Number: 115106

## Product name

SEMA4F antibody

## Specificity

Human, Mouse, Rat; other species not tested.

## Antibody description

SEMA4F Rabbit Polyclonal antibody. Positive WB detected in mouse lung tissue, HepG2 cells, human liver tissue, mouse brain tissue, Y79 cells. Positive IP detected in HepG2 cells. Observed molecular weight by Western-blot: 66 kDa, 84 kDa

## Preparation

This antibody was obtained by immunization of SEMA4F recombinant protein (Accession Number: NM\_001271661). Purification method: Antigen affinity purified.

## Formulation

PBS with 0.02% sodium azide and 50% glycerol pH 7.3.

## Storage

Store at -20°C. DO NOT ALIQUOT

## Clonality

Polyclonal

## Ig Type

Rabbit IgG

## Applications

ELISA, WB, IP

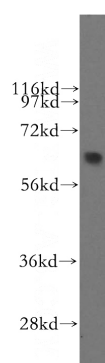
## Dilutions

Recommended Dilution:

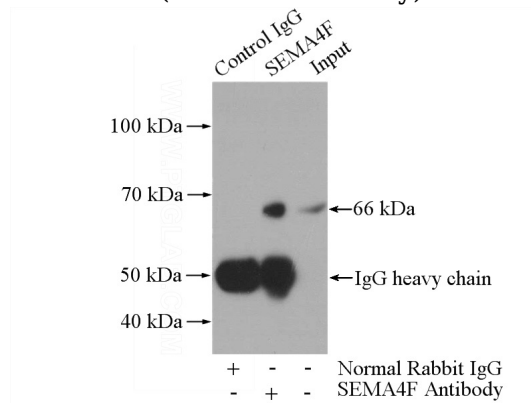
WB: 1:500-1:5000

IP: 1:200-1:2000

## Validations



mouse lung tissue were subjected to SDS PAGE followed by western blot with Catalog No:115106(SEMA4F antibody) at dilution of 1:400



IP Result of anti-SEMA4F (IP:Catalog No:115106, 4ug; Detection:Catalog No:115106 1:500) with HepG2 cells lysate 3600ug.