

# SEC61B-Specific antibody



Catalog Number: 115088

## Product name

SEC61B-Specific antibody

IHC: 1:20-1:200

IF: 1:20-1:200

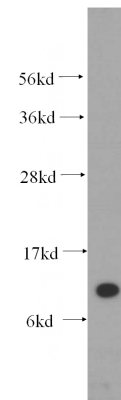
## Specificity

Human, Mouse; other species not tested.

## Validations

## Antibody description

SEC61B-Specific Rabbit Polyclonal antibody. Positive IHC detected in human cervical cancer tissue, human liver tissue. Positive IF detected in HeLa cells. Positive WB detected in mouse liver tissue, HeLa cells, human kidney tissue. Observed molecular weight by Western-blot: 10 kDa



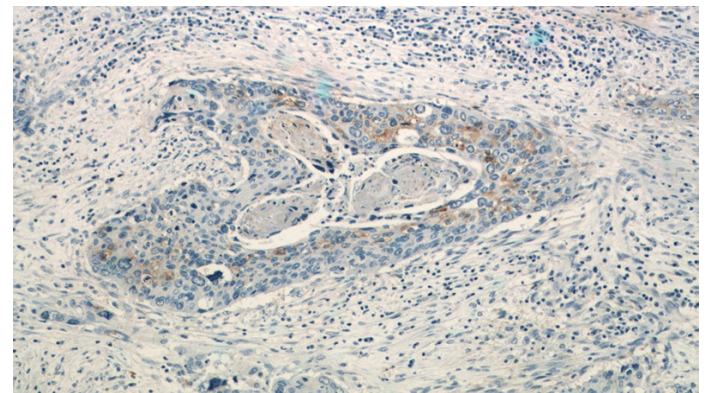
## Preparation

This antibody was obtained by immunization of Peptide (Accession Number: NM\_006808). Purification method: Antigen affinity purified.

mouse liver tissue were subjected to SDS PAGE followed by western blot with Catalog No:115088(SEC61B-Specific antibody) at dilution of 1:500

## Formulation

PBS with 0.02% sodium azide and 50% glycerol pH 7.3.



## Storage

Store at -20°C. DO NOT ALIQUOT

Immunohistochemistry of paraffin-embedded human cervical cancer tissue slide using Catalog No:115088(SEC61B-Specific Antibody) at dilution of 1:50 (under 10x lens)

## Clonality

Polyclonal

## Ig Type

Rabbit IgG

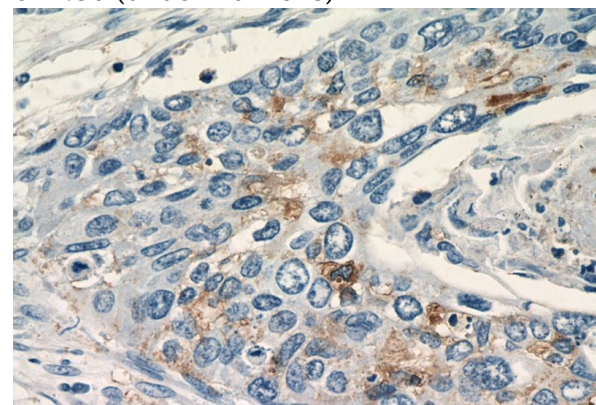
## Applications

ELISA, WB, IHC, IF

## Dilutions

Recommended Dilution:

WB: 1:1000-1:10000



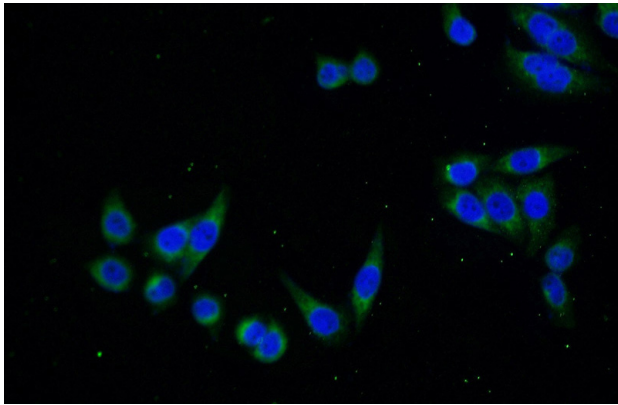
# SEC61B-Specific antibody



Catalog Number: 115088

---

Immunohistochemistry of paraffin-embedded human cervical cancer tissue slide using Catalog No:115088(SEC61B-Specific Antibody) at dilution of 1:50 (under 40x lens)



Immunofluorescent analysis of (-20oc Ethanol) fixed HeLa cells using Catalog No:115088(SEC61B-Specific Antibody) at dilution of 1:50 and Alexa Fluor 488-conjugated AffiniPure Goat Anti-Rabbit IgG(H+L)