

SEC61B antibody

Catalog Number: 115086

Product name

SEC61B antibody

WB: 1:200-1:2000

IP: 1:200-1:2000

Specificity

Human, Mouse; other species not tested.

IHC: 1:20-1:200

IF: 1:50-1:500

Antibody description

SEC61B Rabbit Polyclonal antibody. Positive IF detected in HeLa cells, HepG2 cells. Positive IHC detected in human cervical cancer tissue. Positive WB detected in mouse liver tissue, HeLa cells, HepG2 cells, L02 cells. Positive IP detected in HepG2 cells. Observed molecular weight by Western-blot: 12-15 kDa

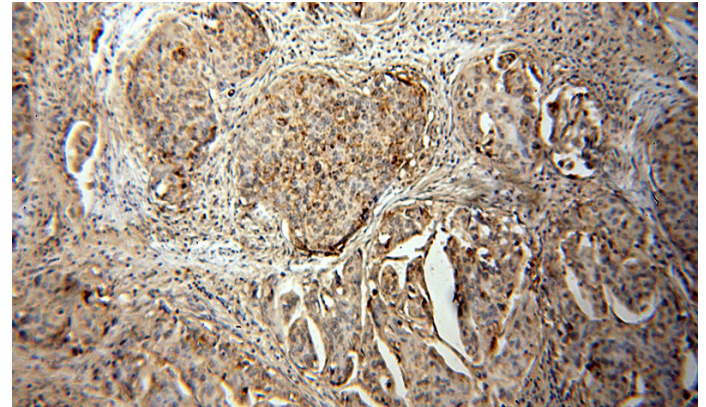
Validations



mouse liver tissue were subjected to SDS PAGE followed by western blot with Catalog No:115086(SEC61B antibody) at dilution of 1:500

Preparation

This antibody was obtained by immunization of SEC61B recombinant protein (Accession Number: NM_006808). Purification method: Antigen affinity purified.



Formulation

PBS with 0.02% sodium azide and 50% glycerol pH 7.3.

Immunohistochemical of paraffin-embedded human cervical cancer using Catalog No:115086(SEC61B antibody) at dilution of 1:50 (under 10x lens)

Storage

Store at -20°C. DO NOT ALIQUOT

Clonality

Polyclonal

Ig Type

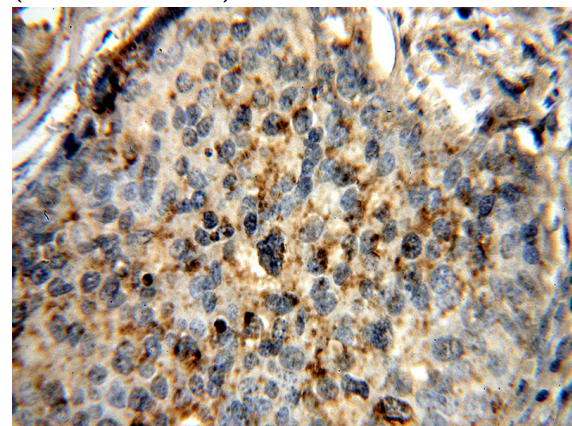
Rabbit IgG

Applications

ELISA, WB, IHC, IP, IF

Dilutions

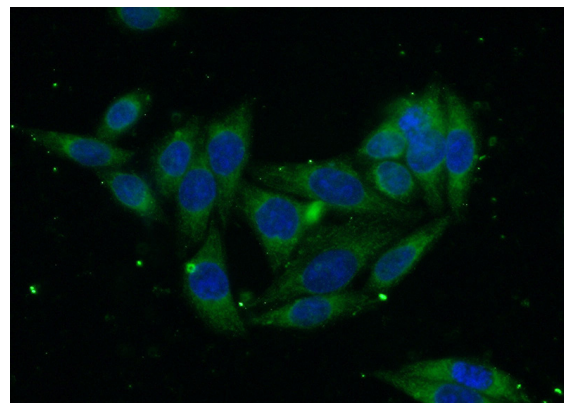
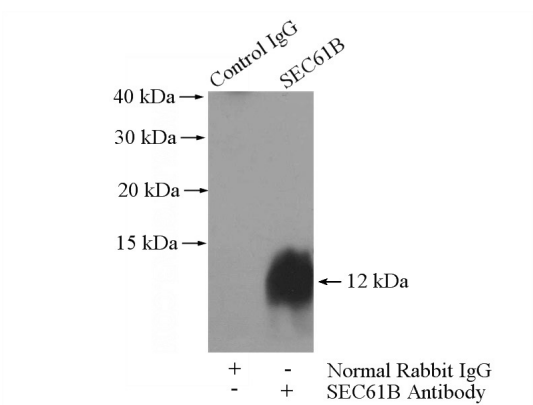
Recommended Dilution:



Immunohistochemical of paraffin-embedded human cervical cancer using Catalog No:115086(SEC61B antibody) at dilution of 1:50 (under 40x lens)

SEC61B antibody

Catalog Number: 115086



IP Result of anti-SEC61B (IP:Catalog No:115086, 4ug; Detection:Catalog No:115086 1:500) with HepG2 cells lysate 1800ug.

Immunofluorescent analysis of (-20oc Ethanol) fixed HeLa cells using Catalog No:115086(SEC61B Antibody) at dilution of 1:50 and Alexa Fluor 488-conjugated AffiniPure Goat Anti-Rabbit IgG(H+L)