

SEC24C antibody



Catalog Number: 115080

Product name

SEC24C antibody

Specificity

Human, Mouse, Rat; other species not tested.

Antibody description

SEC24C Rabbit Polyclonal antibody. Positive WB detected in HeLa cells. Positive IF detected in HeLa cells. Observed molecular weight by Western-blot: 110-120 kDa

Preparation

This antibody was obtained by immunization of SEC24C recombinant protein (Accession Number: NM_004922). Purification method: Antigen affinity purified.

Formulation

PBS with 0.02% sodium azide and 50% glycerol pH 7.3.

Storage

Store at -20°C. DO NOT ALIQUOT

Clonality

Polyclonal

Ig Type

Rabbit IgG

Applications

ELISA, WB, IF

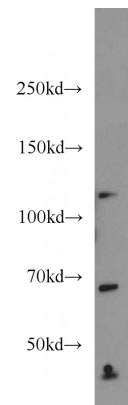
Dilutions

Recommended Dilution:

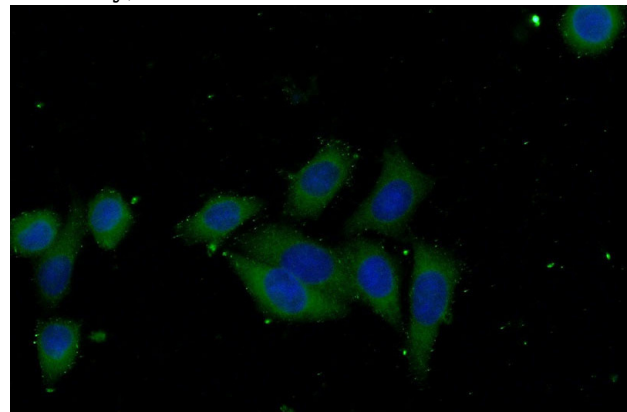
WB: 1:200-1:2000

IF: 1:10-1:100

Validations



HeLa cells were subjected to SDS PAGE followed by western blot with Catalog No:115080(SEC24C antibody) at dilution of 1:500



Immunofluorescent analysis of (-20oc Ethanol) fixed HeLa cells using Catalog No:115080(SEC24C Antibody) at dilution of 1:25 and Alexa Fluor 488-conjugated AffiniPure Goat Anti-Rabbit IgG(H+L)