

SEC24A antibody



Catalog Number: 115079

Product name

SEC24A antibody

WB: 1:500-1:5000

IHC: 1:20-1:200

Specificity

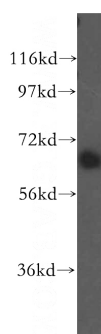
Human, Mouse, Rat; other species not tested.

IF: 1:10-1:100

Validations

Antibody description

SEC24A Rabbit Polyclonal antibody. Positive WB detected in human liver tissue, mouse skeletal muscle tissue, mouse thymus tissue, rat thymus tissue. Positive IF detected in Hela cells. Positive IHC detected in human lymphoma tissue. Observed molecular weight by Western-blot: 66 kDa



Preparation

This antibody was obtained by immunization of SEC24A recombinant protein (Accession Number: NM_001252231). Purification method: Antigen affinity purified.

human liver tissue were subjected to SDS PAGE followed by western blot with Catalog No:115079(SEC24A antibody) at dilution of 1:500

Formulation

PBS with 0.02% sodium azide and 50% glycerol pH 7.3.

Storage

Store at -20°C. DO NOT ALIQUOT

Clonality

Polyclonal

Ig Type

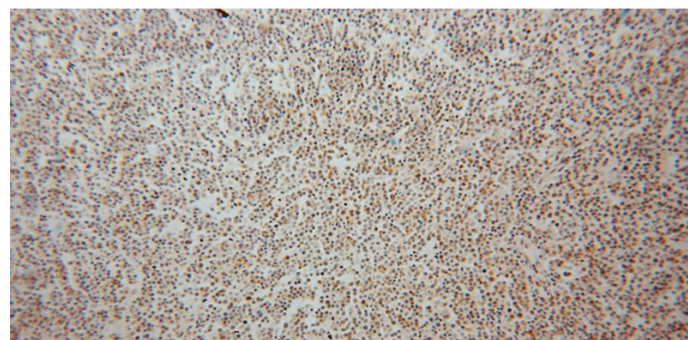
Rabbit IgG

Applications

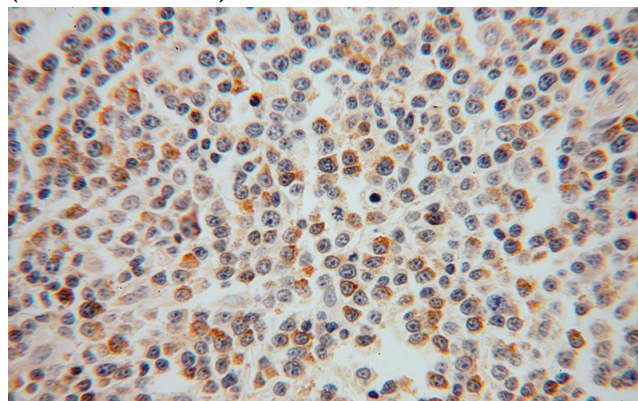
ELISA, WB, IHC, IF

Dilutions

Recommended Dilution:



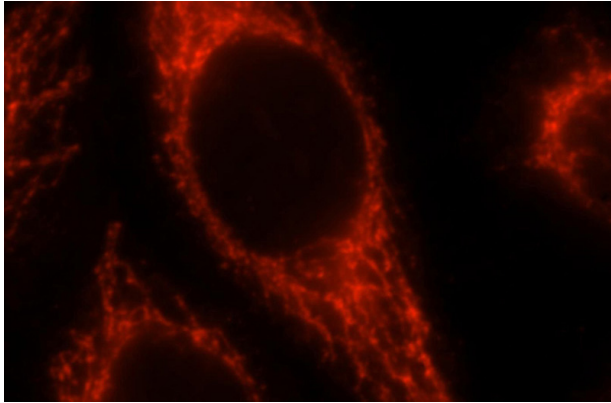
Immunohistochemical of paraffin-embedded human lymphoma using Catalog No:115079(SEC24A antibody) at dilution of 1:50 (under 10x lens)



SEC24A antibody

Catalog Number: 115079

Immunohistochemical of paraffin-embedded human lymphoma using Catalog No:115079(SEC24A antibody) at dilution of 1:50 (under 40x lens)



Immunofluorescent analysis of Hela cells, using SEC24A antibody Catalog No:115079 at 1:25 dilution and Rhodamine-labeled goat anti-rabbit IgG (red).