

SAR1A antibody



Catalog Number: 115065

Product name

SAR1A antibody

Specificity

Human, Mouse, Rat; other species not tested.

Antibody description

SAR1A Rabbit Polyclonal antibody. Positive IHC detected in human skeletal muscle tissue. Positive WB detected in HepG2 cells, HeLa cells, HT-1080 cells, mouse kidney tissue. Observed molecular weight by Western-blot: 23-25 kDa

Preparation

This antibody was obtained by immunization of Peptide (Accession Number: NM_020150). Purification method: Antigen affinity purified.

Formulation

PBS with 0.02% sodium azide and 50% glycerol pH 7.3.

Storage

Store at -20°C. DO NOT ALIQUOT

Clonality

Polyclonal

Ig Type

Rabbit IgG

Applications

ELISA, WB, IHC

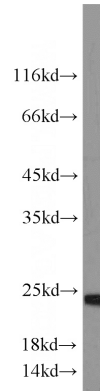
Dilutions

Recommended Dilution:

WB: 1:200-1:2000

IHC: 1:20-1:200

Validations



HepG2 cells were subjected to SDS PAGE followed by western blot with Catalog No:115065(SAR1A antibody) at dilution of 1:500



Immunohistochemistry of paraffin-embedded human skeletal muscle slide using Catalog No:115065(SAR1A Antibody) at dilution of 1:50



Immunohistochemistry of paraffin-embedded human skeletal muscle slide using Catalog No:115065(SAR1A Antibody) at dilution of 1:50