

SAP18 antibody

Catalog Number: 115060

Product name

SAP18 antibody

IP: 1:200-1:2000

IHC: 1:20-1:200

Specificity

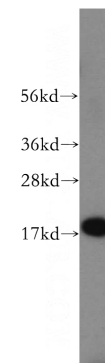
Human, Mouse, Rat; other species not tested.

IF: 1:20-1:200

Validations

Antibody description

SAP18 Rabbit Polyclonal antibody. Positive IP detected in K-562 cells. Positive WB detected in K-562 cells. Positive IF detected in Hela cells. Positive IHC detected in human cervical cancer tissue. Observed molecular weight by Western blot: 18 kDa



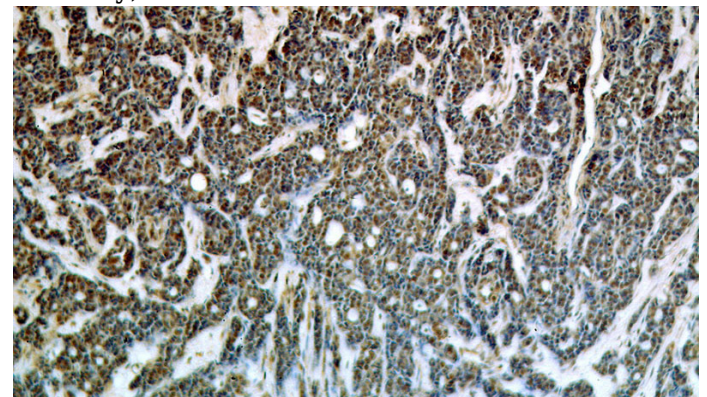
Preparation

This antibody was obtained by immunization of SAP18 recombinant protein (Accession Number: BC030836). Purification method: Antigen affinity purified.

K-562 cells were subjected to SDS PAGE followed by western blot with Catalog No:115060(SAP18 antibody) at dilution of 1:500

Formulation

PBS with 0.02% sodium azide and 50% glycerol pH 7.3.



Storage

Store at -20°C. DO NOT ALIQUOT

Clonality

Polyclonal

Ig Type

Rabbit IgG

Immunohistochemical of paraffin-embedded human cervical cancer using Catalog No:115060(SAP18 antibody) at dilution of 1:50 (under 10x lens)

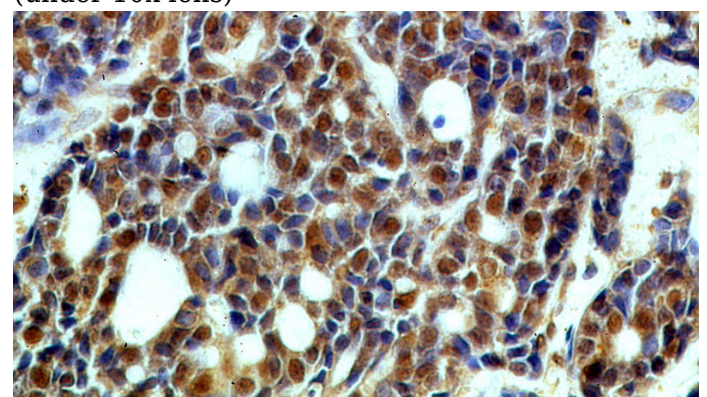
Applications

ELISA, WB, IHC, IF, IP

Dilutions

Recommended Dilution:

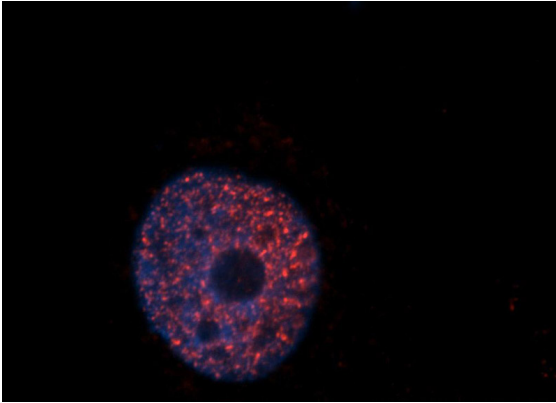
WB: 1:200-1:2000



SAP18 antibody

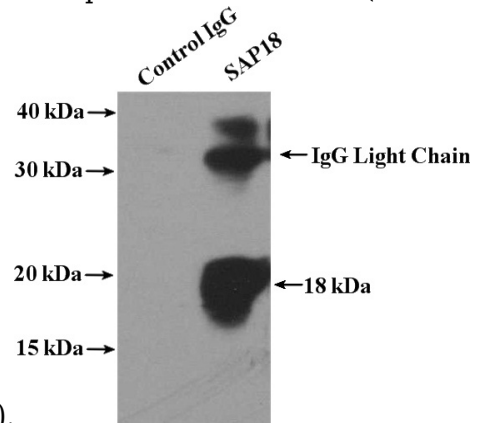
Catalog Number: 115060

Immunohistochemical of paraffin-embedded human cervical cancer using Catalog No:115060(SAP18 antibody) at dilution of 1:50 (under 40x lens)



Immunofluorescent analysis of Hela cells, using SAP18 antibody Catalog No:115060 at 1:50

dilution and Rhodamine-labeled goat anti-rabbit IgG (red). Blue pseudocolor = DAPI (fluorescent



DNA dye).

IP Result of anti-SAP18 (IP:Catalog No:115060, 4ug; Detection:Catalog No:115060 1:500) with K-562 cells lysate 3200ug.