

SAMHD1 antibody



Catalog Number: 115056

Product name

SAMHD1 antibody

Recommended Dilution:

WB: 1:500-1:5000

Specificity

Human, Mouse, Rat; other species not tested.

IP: 1:200-1:1000

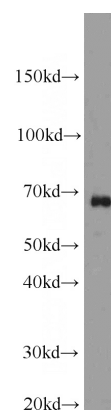
IHC: 1:20-1:200

Antibody description

SAMHD1 Rabbit Polyclonal antibody. Positive WB detected in HepG2 cells, human brain tissue, human heart tissue, K-562 cells, L02 cells, mouse heart tissue. Positive IP detected in K-562 cells. Positive IHC detected in human lung cancer tissue, human colon cancer tissue. Positive IF detected in HepG2 cells. Positive FC detected in K-562 cells. Observed molecular weight by Western-blot: 64-72 kDa

IF: 1:50-1:500

Validations



Preparation

This antibody was obtained by immunization of SAMHD1 recombinant protein (Accession Number: NM_015474). Purification method: Antigen affinity purified.

HepG2 cells were subjected to SDS PAGE followed by western blot with Catalog No:115056(SAMHD1 antibody) at dilution of 1:1000

Formulation

PBS with 0.1% sodium azide and 50% glycerol pH 7.3.

Storage

Store at -20°C. DO NOT ALIQUOT

Clonality

Polyclonal

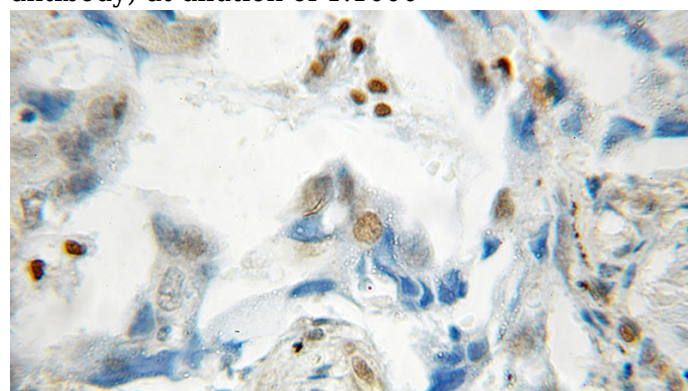
Ig Type

Rabbit IgG

Applications

ELISA, WB, IHC, IP, FC, IF

Dilutions

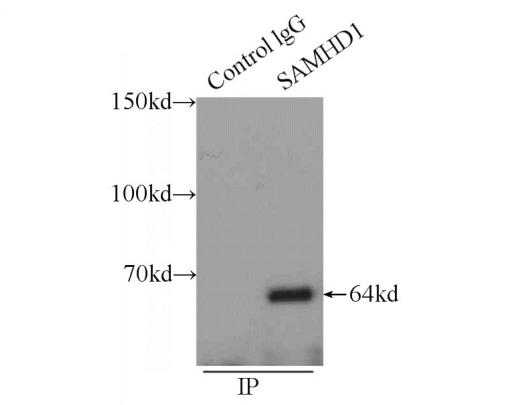


Immunohistochemical of paraffin-embedded human lung cancer using Catalog No:115056(SAMHD1 antibody) at dilution of 1:50 (under 40x lens)

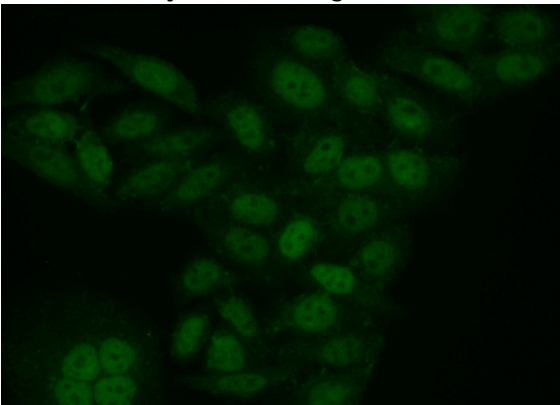
SAMHD1 antibody



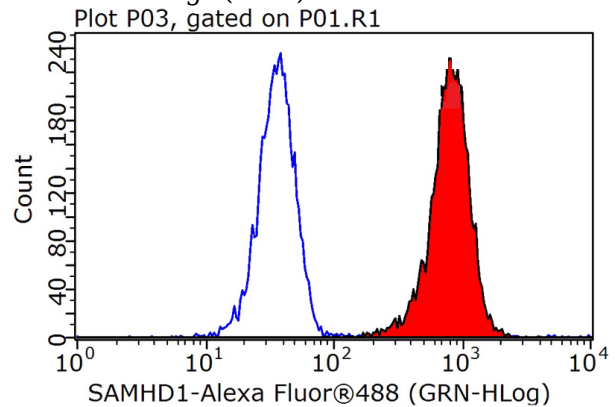
Catalog Number: 115056



IP Result of anti-SAMHD1 (IP:Catalog No:115056, 3ug; Detection:Catalog No:115056 1:300) with K-562 cells lysate 2400ug.



Immunofluorescent analysis of (10% Formaldehyde) fixed HepG2 cells using Catalog No:115056(SAMHD1 Antibody) at dilution of 1:50 and Alexa Fluor 488-conjugated AffiniPure Goat Anti-Rabbit IgG(H+L)



1X10⁶ K-562 cells were stained with 0.2ug SAMHD1 antibody (Catalog No:115056, red) and control antibody (blue). Fixed with 90% MeOH blocked with 3% BSA (30 min). Alexa Fluor 488-conjugated AffiniPure Goat Anti-Rabbit IgG(H+L) with dilution 1:1000.