

# SAFB antibody

Catalog Number: 115043

## Product name

SAFB antibody

WB: 1:500-1:5000

IHC: 1:20-1:200

## Specificity

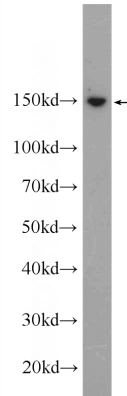
Human; other species not tested.

IF: 1:20-1:200

## Antibody description

SAFB Rabbit Polyclonal antibody. Positive IF detected in A431 cells. Positive IHC detected in human breast cancer tissue, human testis tissue. Positive WB detected in MCF-7 cells, A431 cells, HEK-293 cells, HeLa cells, HepG2 cells, MCF7 cells. Observed molecular weight by Western-blot: 150 kDa

## Validations



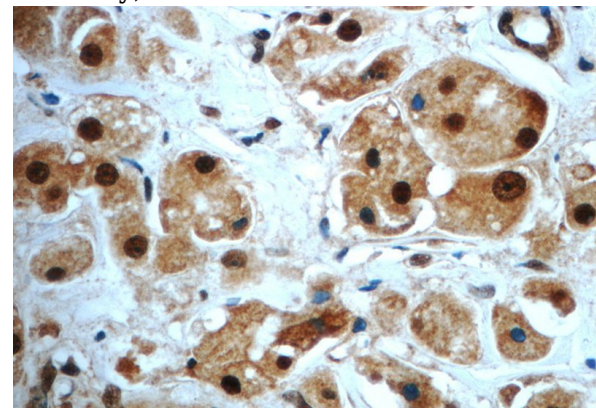
## Preparation

This antibody was obtained by immunization of SAFB recombinant protein (Accession Number: NM\_001201338). Purification method: Antigen affinity purified.

MCF-7 cells were subjected to SDS PAGE followed by western blot with Catalog No:115043(SAFB Antibody) at dilution of 1:1000

## Formulation

PBS with 0.02% sodium azide and 50% glycerol pH 7.3.



## Storage

Store at -20°C. DO NOT ALIQUOT

## Clonality

Polyclonal

Immunohistochemistry of paraffin-embedded human breast cancer slide using Catalog No:115043(SAFB Antibody) at dilution of 1:50

## Ig Type

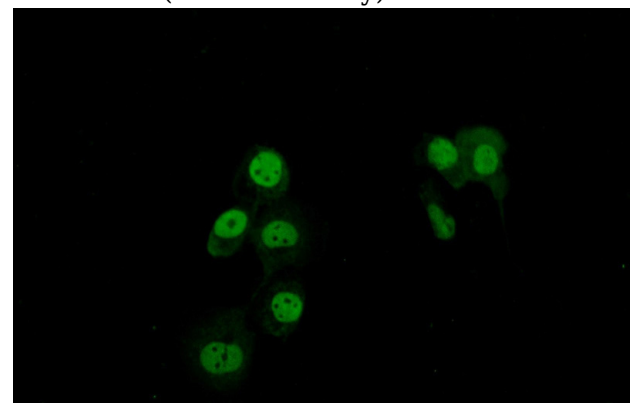
Rabbit IgG

## Applications

ELISA, WB, IF, IHC

## Dilutions

Recommended Dilution:



# SAFB antibody



Catalog Number: 115043

---

Immunofluorescent analysis of A431 cells using  
Catalog No:115043(SAFB Antibody) at dilution of

1:50 and Alexa Fluor 488-conjugated AffiniPure  
Goat Anti-Rabbit IgG(H+L)