

# SAA2 antibody

Catalog Number: 115038

## Product name

SAA2 antibody

IHC: 1:20-1:200

IF: 1:10-1:100

## Specificity

Human; other species not tested.

## Antibody description

SAA2 Rabbit Polyclonal antibody. Positive IF detected in A549 cells. Positive IHC detected in human hepat°Cirrhosis tissue. Positive WB detected in A549 cells, Transfected HEK-293 cells. Observed molecular weight by Western-blot: 12-13 kDa

## Preparation

This antibody was obtained by immunization of SAA2 recombinant protein (Accession Number: NM\_001385666). Purification method: Antigen affinity purified.

## Formulation

PBS with 0.1% sodium azide and 50% glycerol pH 7.3.

## Storage

Store at -20°C. DO NOT ALIQUOT

## Clonality

Polyclonal

## Ig Type

Rabbit IgG

## Applications

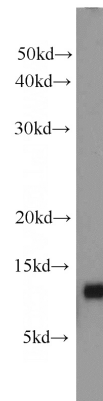
ELISA, IHC, WB, IF

## Dilutions

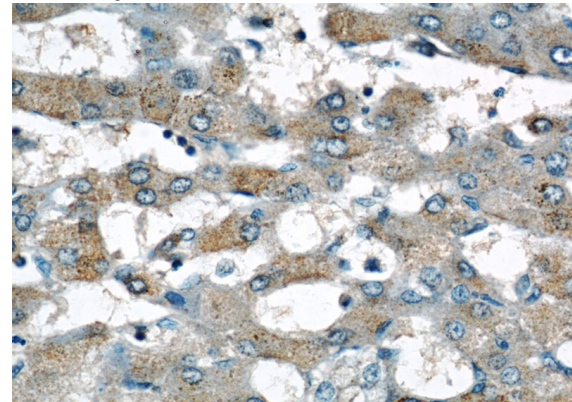
Recommended Dilution:

WB: 1:500-1:5000

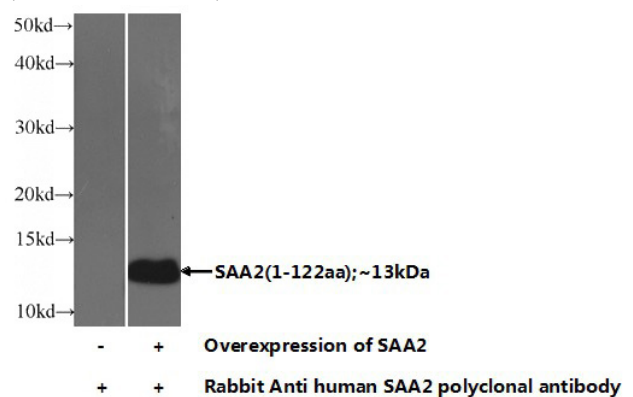
## Validations



A549 cells were subjected to SDS PAGE followed by western blot with Catalog No:115038(SAA2 antibody) at dilution of 1:1000



Immunohistochemical of paraffin-embedded human hepatocirrhosis using Catalog No:115038(SAA2 antibody) at dilution of 1:50 (under 40x lens)



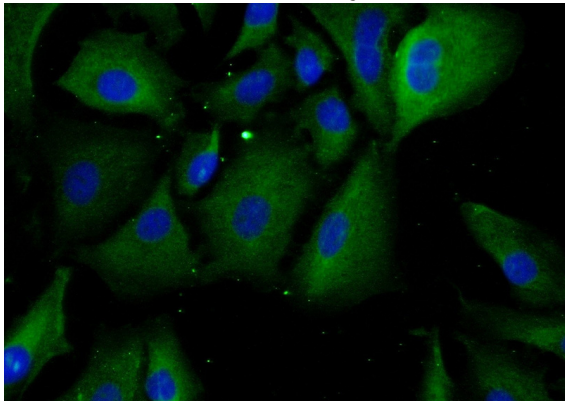
Transfected HEK-293 cells were subjected to SDS

# SAA2 antibody

Catalog Number: 115038

---

PAGE followed by western blot with Catalog No:115038(SAA2 Antibody) at dilution of 1:1000



Immunofluorescent analysis of (-20oc Ethanol) fixed A549 cells using Catalog No:115038(SAA2 Antibody) at dilution of 1:25 and Alexa Fluor 488-conjugated AffiniPure Goat Anti-Rabbit IgG(H+L)