

# S6K2 antibody

Catalog Number: 115036

## Product name

S6K2 antibody

IP: 1:500-1:5000

IF: 1:50-1:500

## Specificity

Human, Mouse, Rat; other species not tested.

## Antibody description

S6K2 Rabbit Polyclonal antibody. Positive IF detected in MCF-7 cells. Positive IP detected in MCF-7 cells. Positive WB detected in MCF7 cells. Observed molecular weight by Western-blot: 54 kDa

## Preparation

This antibody was obtained by immunization of S6K2 recombinant protein (Accession Number: NM\_003952). Purification method: Antigen affinity purified.

## Formulation

PBS with 0.02% sodium azide and 50% glycerol pH 7.3.

## Storage

Store at -20°C. DO NOT ALIQUOT

## Clonality

Polyclonal

## Ig Type

Rabbit IgG

## Applications

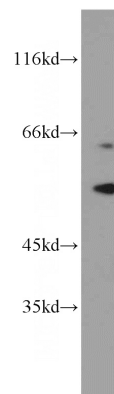
ELISA, WB, IP, IF

## Dilutions

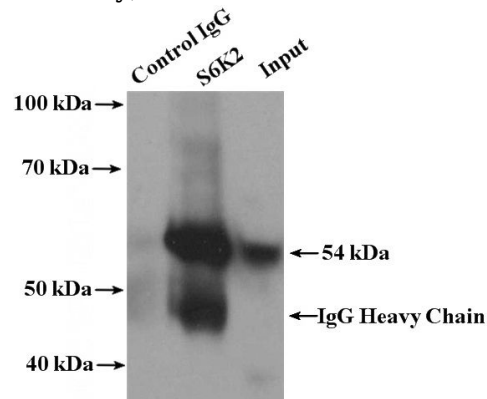
Recommended Dilution:

WB: 1:500-1:5000

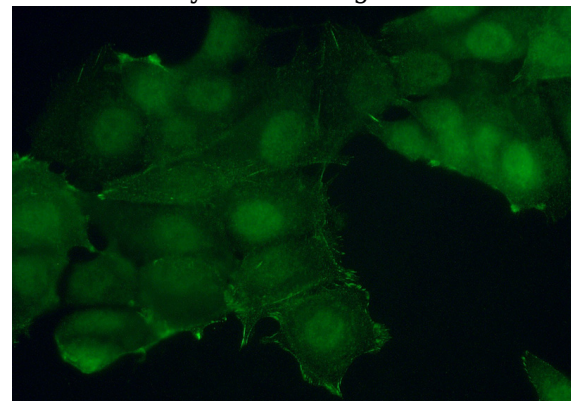
## Validations



MCF7 cells were subjected to SDS PAGE followed by western blot with Catalog No:115036(RPS6KB2 antibody) at dilution of 1:1500



IP Result of anti-RPS6KB2 (IP:Catalog No:115036, 4ug; Detection:Catalog No:115036 1:1000) with MCF-7 cells lysate 2800ug.



Immunofluorescent analysis of (10% Formaldehyde) fixed MCF-7 cells using Catalog

# S6K2 antibody



Catalog Number: 115036

---

No:115036(RPS6KB2 Antibody) at dilution of 1:50 and Alexa Fluor 488-conjugated AffiniPure Goat Anti-Rabbit IgG(H+L)