

S1PR5/EDG8 antibody



Catalog Number: 115035

Product name

S1PR5/EDG8 antibody

Specificity

Human, Mouse, Rat; other species not tested.

Antibody description

S1PR5/EDG8 Rabbit Polyclonal antibody. Positive WB detected in mouse brain tissue, HEK-293 cells, HeLa cells, Jurkat cells, K-562 cells. Observed molecular weight by Western-blot: 50-55 kDa

Preparation

This antibody was obtained by immunization of S1PR5/EDG8 recombinant protein (Accession Number: NM_030760). Purification method: Antigen affinity purified.

Formulation

PBS with 0.02% sodium azide and 50% glycerol pH 7.3.

Storage

Store at -20°C. DO NOT ALIQUOT

Clonality

Polyclonal

Ig Type

Rabbit IgG

Applications

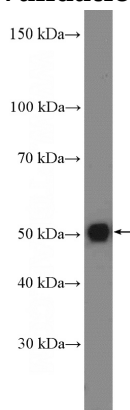
ELISA, WB

Dilutions

Recommended Dilution:

WB: 1:200-1:2000

Validations



mouse brain tissue were subjected to SDS PAGE followed by western blot with Catalog No:115035(S1PR5 Antibody) at dilution of 1:600