

# SDHB antibody

Catalog Number: 115032

## Product name

SDHB antibody

IP: 1:200-1:2000

IHC: 1:20-1:200

## Specificity

Human, Mouse, Rat; other species not tested.

## Antibody description

SDHB Rabbit Polyclonal antibody. Positive IP detected in HEK-293 cells. Positive WB detected in HEK-293 cells. Positive IHC detected in human heart tissue. Observed molecular weight by Western-blot: 32 kDa

## Preparation

This antibody was obtained by immunization of SDHB recombinant protein (Accession Number: NM\_003000). Purification method: Antigen affinity purified.

## Formulation

PBS with 0.1% sodium azide and 50% glycerol pH 7.3.

## Storage

Store at -20°C. DO NOT ALIQUOT

## Clonality

Polyclonal

## Ig Type

Rabbit IgG

## Applications

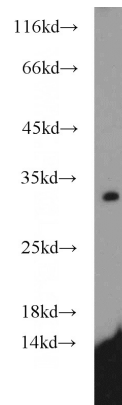
ELISA, WB, IHC, IP

## Dilutions

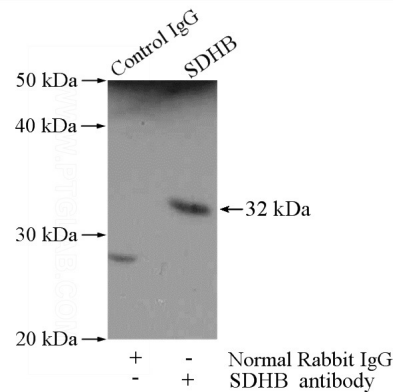
Recommended Dilution:

WB: 1:500-1:5000

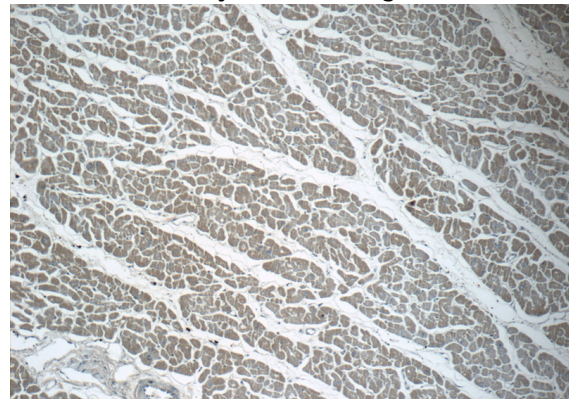
## Validations



HEK-293 cells were subjected to SDS PAGE followed by western blot with Catalog No:115032(SDHB antibody) at dilution of 1:1000



IP Result of anti-SDHB (IP:Catalog No:115032, 4ug; Detection:Catalog No:115032 1:500) with HEK-293 cells lysate 2800ug.



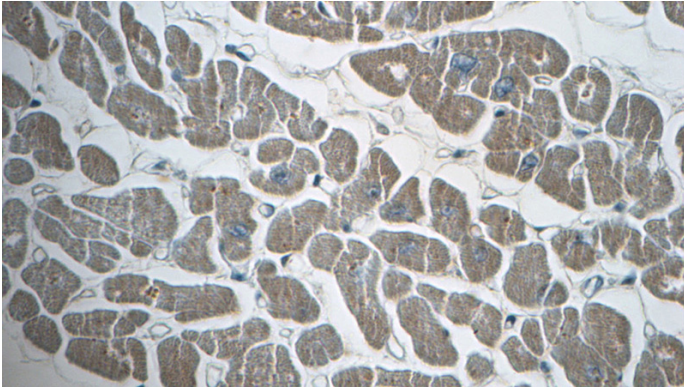
Immunohistochemistry of paraffin-embedded human heart tissue slide using Catalog No:115032 SDHB antibody

# SDHB antibody

Catalog Number: 115032

---

No:115032(SDHB Antibody) at dilution of 1:50  
(under 10x lens)



Immunohistochemistry of paraffin-embedded  
human heart tissue slide using Catalog  
No:115032(SDHB Antibody) at dilution of 1:50  
(under 40x lens)