

SDHA antibody

Catalog Number: 115031

Product name

SDHA antibody

Specificity

Human, Mouse, Rat; other species not tested.

Antibody description

SDHA Rabbit Polyclonal antibody. Positive WB detected in HEK-293 cells, HeLa cells, HepG2 cells, mouse brain tissue. Positive IP detected in mouse brain tissue. Positive IHC detected in human kidney tissue, human heart tissue. Positive IF detected in HepG2 cells. Observed molecular weight by Western-blot: 62-66 kDa

Preparation

This antibody was obtained by immunization of SDHA recombinant protein (Accession Number: NM_004168). Purification method: Antigen affinity purified.

Formulation

PBS with 0.1% sodium azide and 50% glycerol pH 7.3.

Storage

Store at -20°C. DO NOT ALIQUOT

Clonality

Polyclonal

Ig Type

Rabbit IgG

Applications

ELISA, WB, IHC, IF, IP

Dilutions

Recommended Dilution:

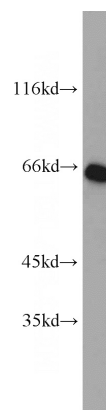
WB: 1:200-1:2000

IP: 1:200-1:2000

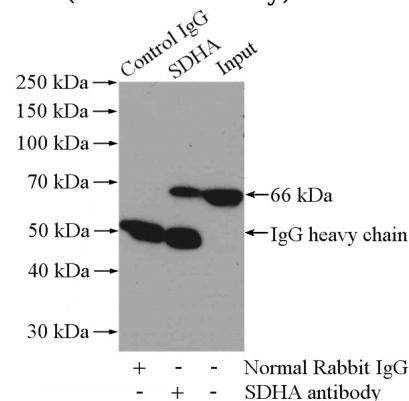
IHC: 1:20-1:200

IF: 1:10-1:100

Validations



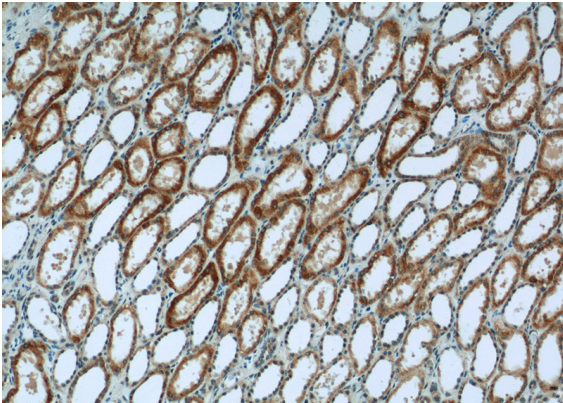
HEK-293 cells were subjected to SDS PAGE followed by western blot with Catalog No:115031(SDHA antibody) at dilution of 1:800



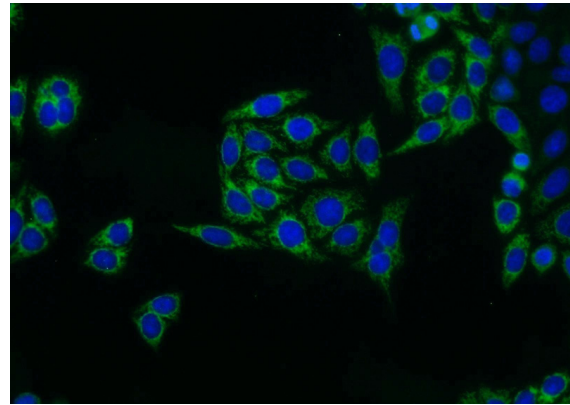
IP Result of anti-SDHA (IP:Catalog No:115031, 4ug; Detection:Catalog No:115031 1:500) with mouse brain tissue lysate 4000ug.

SDHA antibody

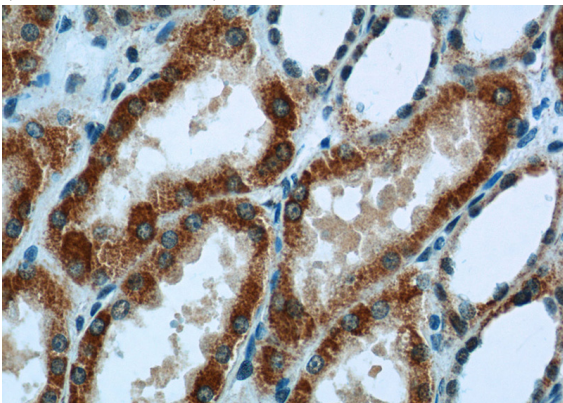
Catalog Number: 115031



Immunohistochemistry of paraffin-embedded human kidney tissue slide using Catalog No:115031(SDHA Antibody) at dilution of 1:50 (under 40x lens)



Immunofluorescent analysis of HepG2 cells using Catalog No:115031(SDHA Antibody) at dilution of 1:25 and Alexa Fluor 488-conjugated AffiniPure Goat Anti-Rabbit IgG(H+L)



Immunohistochemistry of paraffin-embedded human kidney tissue slide using Catalog No:115031(SDHA Antibody) at dilution of 1:50 (under 10x lens)