

# SDCCAG1 antibody



Catalog Number: 115025

## Product name

SDCCAG1 antibody

IP: 1:200-1:2000

IHC: 1:20-1:200

## Specificity

Human, Mouse, Rat; other species not tested.

## Antibody description

SDCCAG1 Rabbit Polyclonal antibody. Positive IP detected in A549 cells. Positive WB detected in A549 cells, HEK-293 cells. Positive IHC detected in human lung cancer tissue. Observed molecular weight by Western-blot: 123kd

## Preparation

This antibody was obtained by immunization of SDCCAG1 recombinant protein (Accession Number: BC020794). Purification method: Antigen affinity purified.

## Formulation

PBS with 0.1% sodium azide and 50% glycerol pH 7.3.

## Storage

Store at -20°C. DO NOT ALIQUOT

## Clonality

Polyclonal

## Ig Type

Rabbit IgG

## Applications

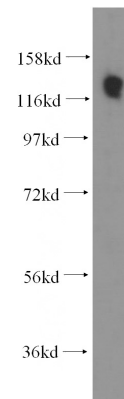
ELISA, WB, IHC, IP

## Dilutions

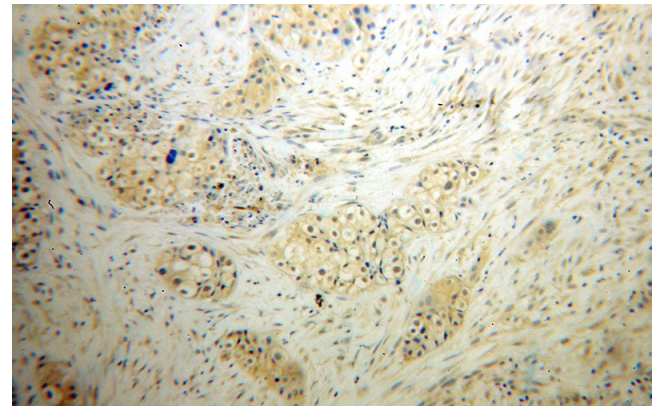
Recommended Dilution:

WB: 1:200-1:2000

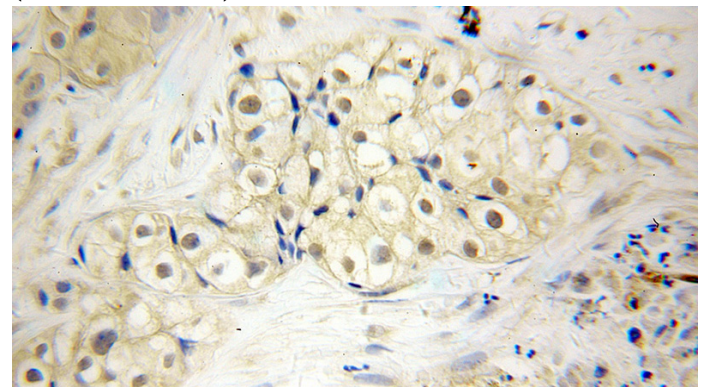
## Validations



A549 cells were subjected to SDS PAGE followed by western blot with Catalog No:115025(SDCCAG1 antibody) at dilution of 1:500



Immunohistochemical of paraffin-embedded human lung cancer using Catalog No:115025(SDCCAG1 antibody) at dilution of 1:50 (under 10x lens)

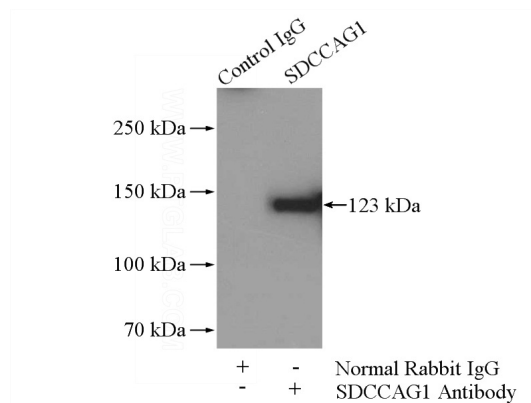


# SDCCAG1 antibody

Catalog Number: 115025

---

Immunohistochemical of paraffin-embedded human lung cancer using Catalog No:115025(SDCCAG1 antibody) at dilution of 1:50 (under 40x lens)



IP Result of anti-SDCCAG1 (IP:Catalog No:115025, 4ug; Detection:Catalog No:115025 1:500) with A549 cells lysate 1800ug.