

# SCYL3 antibody



Catalog Number: 115024

## Product name

SCYL3 antibody

## Specificity

human; other species not tested.

## Antibody description

SCYL3 Rabbit Polyclonal antibody. Positive WB detected in human brain tissue. Positive IHC detected in human lung cancer. Observed molecular weight by Western-blot: 83kd

## Preparation

This antibody was obtained by immunization of SCYL3 recombinant protein (Accession Number: XM\_017001862). Purification method: Antigen affinity purified.

## Formulation

PBS with 0.1% sodium azide and 50% glycerol pH 7.3.

## Storage

Store at -20°C. DO NOT ALIQUOT

## Clonality

Polyclonal

## Ig Type

Rabbit IgG

## Applications

ELISA, WB, IHC

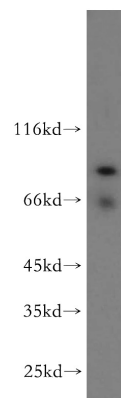
## Dilutions

Recommended Dilution:

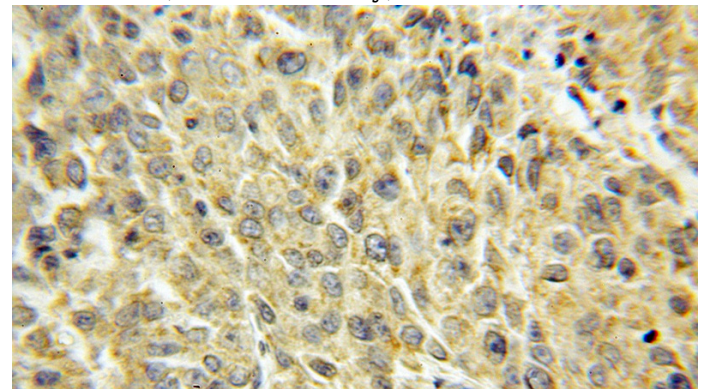
WB: 1:200-1:1000

IHC: 1:20-1:200

## Validations



human brain tissue were subjected to SDS PAGE followed by western blot with Catalog No:115024(SCYL3 antibody) at dilution of 1:200



Immunohistochemical of paraffin-embedded human lung cancer using Catalog No:115024(SCYL3 antibody) at dilution of 1:50 (under 10x lens)