

# SCUBE3 antibody



Catalog Number: 115022

## Product name

SCUBE3 antibody

## Specificity

Human, Mouse, Rat; other species not tested.

## Antibody description

SCUBE3 Rabbit Polyclonal antibody. Positive WB detected in mouse kidney tissue, mouse lung tissue. Positive IHC detected in human kidney tissue. Observed molecular weight by Western-blot: 130kd

## Preparation

This antibody was obtained by immunization of SCUBE3 recombinant protein (Accession Number: NM\_001303136). Purification method: Antigen affinity purified.

## Formulation

PBS with 0.02% sodium azide and 50% glycerol pH 7.3.

## Storage

Store at -20°C. DO NOT ALIQUOT

## Clonality

Polyclonal

## Ig Type

Rabbit IgG

## Applications

ELISA, WB, IHC

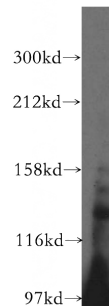
## Dilutions

Recommended Dilution:

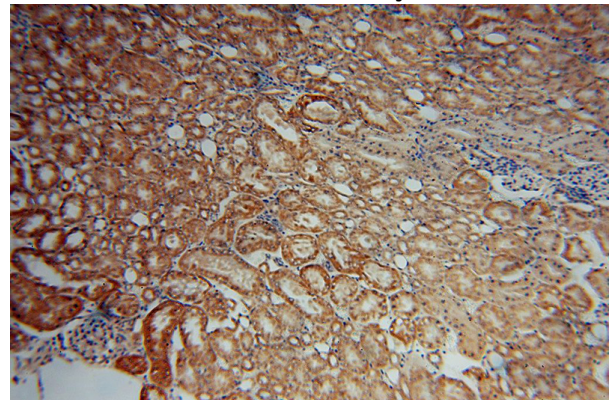
WB: 1:200-1:1000

IHC: 1:20-1:200

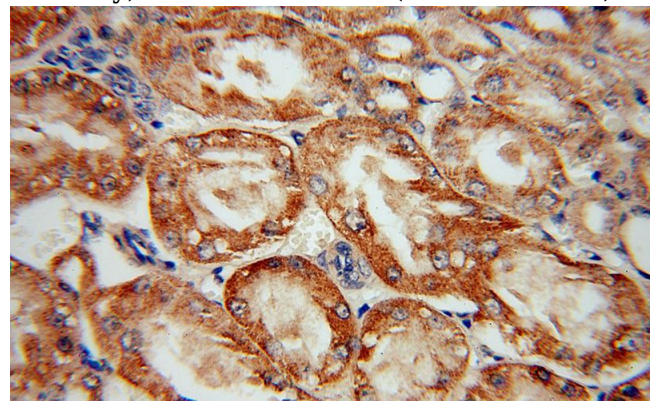
## Validations



mouse kidney tissue were subjected to SDS PAGE followed by western blot with Catalog No:115022(SCUBE3 antibody) at dilution of 1:300



Immunohistochemical of paraffin-embedded human kidney using Catalog No:115022(SCUBE3 antibody) at dilution of 1:50 (under 10x lens)



Immunohistochemical of paraffin-embedded human kidney using Catalog No:115022(SCUBE3 antibody) at dilution of 1:50 (under 40x lens)