

SCRN3 antibody

Catalog Number: 115021

Product name

SCRN3 antibody

WB: 1:500-1:5000

IP: 1:200-1:2000

Specificity

Human, Mouse, Rat; other species not tested.

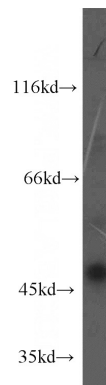
IHC: 1:20-1:200

IF: 1:10-1:100

Antibody description

SCRN3 Rabbit Polyclonal antibody. Positive IHC detected in human kidney tissue, human pancreas tissue. Positive IF detected in HepG2 cells. Positive WB detected in HepG2 cells, A549 cells, HEK-293 cells. Positive IP detected in HEK-293 cells. Observed molecular weight by Western-blot: 49kd

Validations



Preparation

This antibody was obtained by immunization of SCRN3 recombinant protein (Accession Number: BC031821). Purification method: Antigen affinity purified.

HepG2 cells were subjected to SDS PAGE followed by western blot with Catalog No:115021(SCRN3 antibody) at dilution of 1:500

Formulation

PBS with 0.02% sodium azide and 50% glycerol pH 7.3.

Storage

Store at -20°C. DO NOT ALIQUOT

Clonality

Polyclonal

Ig Type

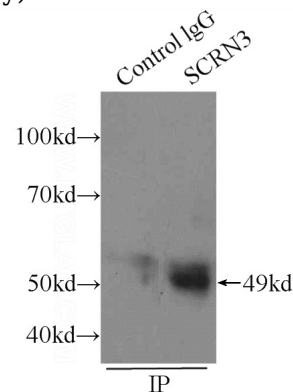
Rabbit IgG

Applications

ELISA, WB, IP, IHC, IF

Dilutions

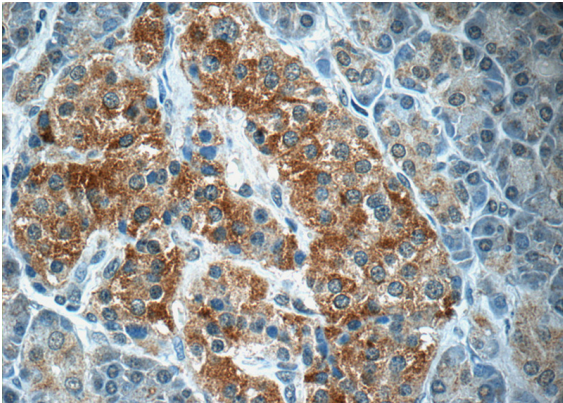
Recommended Dilution:



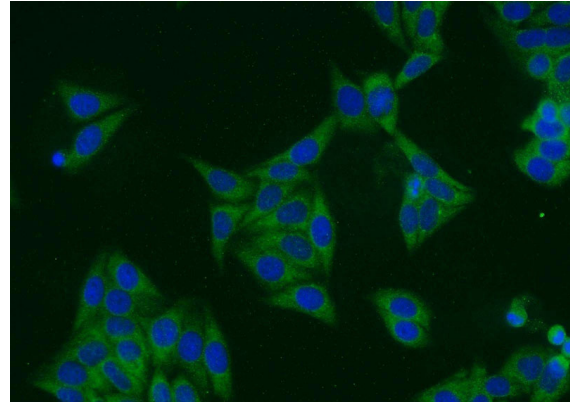
IP Result of anti-SCRN3 (IP:Catalog No:115021, 4ug; Detection:Catalog No:115021 1:800) with HEK-293 cells lysate 1760ug.

SCRN3 antibody

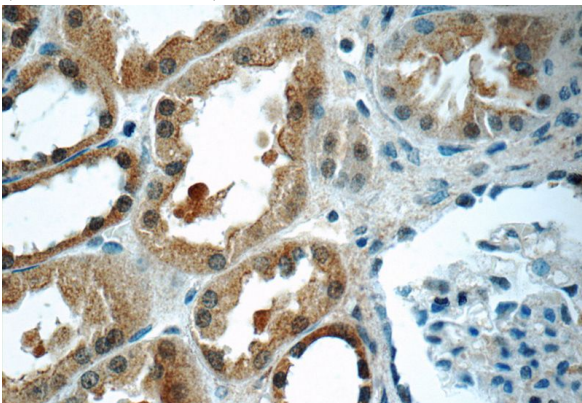
Catalog Number: 115021



Immunohistochemistry of paraffin-embedded human kidney tissue slide using Catalog No:115021(SCRN3 Antibody) at dilution of 1:50 (under 40x lens)



Immunofluorescent analysis of HepG2 cells using Catalog No:115021(SCRN3 Antibody) at dilution of 1:25 and Alexa Fluor 488-conjugated AffiniPure Goat Anti-Rabbit IgG(H+L)



Immunohistochemistry of paraffin-embedded human pancreas tissue slide using Catalog No:115021(SCRN3 Antibody) at dilution of 1:50 (under 40x lens)