

# SCN9A/Nav1.7-Specific antibody



Catalog Number: 115008

## Product name

SCN9A/Nav1.7-Specific antibody

IF: 1:20-1:200

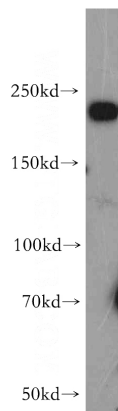
## Specificity

Human; other species not tested.

## Validations

## Antibody description

SCN9A/Nav1.7-Specific Rabbit Polyclonal antibody. Positive WB detected in A431 cells. Positive IF detected in PC-12 cells. Positive IHC detected in human brain tissue. Observed molecular weight by Western-blot: 228kd



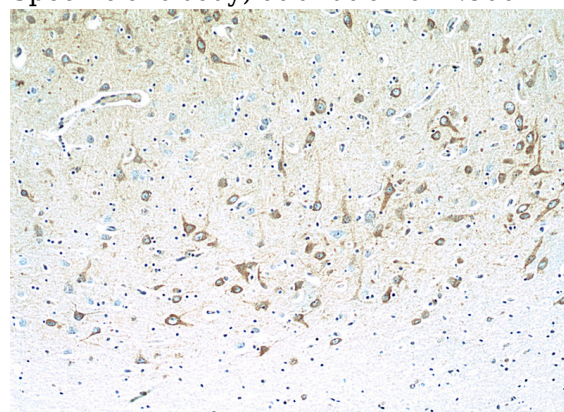
## Preparation

This antibody was obtained by immunization of Peptide (Accession Number: NM\_002977). Purification method: Antigen affinity purified.

A431 cells were subjected to SDS PAGE followed by western blot with Catalog No:115008(SCN9A-Specific antibody) at dilution of 1:500

## Formulation

PBS with 0.02% sodium azide and 50% glycerol pH 7.3.



## Storage

Store at -20°C. DO NOT ALIQUOT

## Clonality

Polyclonal

Immunohistochemistry of paraffin-embedded human brain tissue slide using Catalog No:115008(SCN9A-Specific Antibody) at dilution of 1:200 (under 10x lens)

## Ig Type

Rabbit IgG

## Applications

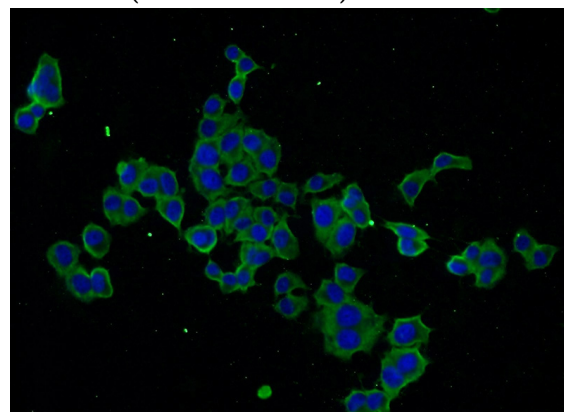
ELISA, WB, IF, IHC

## Dilutions

Recommended Dilution:

WB: 1:500-1:5000

IHC: 1:20-1:200



Immunofluorescent analysis of PC-12 cells using Catalog No:115008(SCN9A-Specific Antibody) at

# SCN9A/Nav1.7-Specific antibody



Catalog Number: 115008

---

dilution of 1:50 and Alexa Fluor 488-conjugated

AffiniPure Goat Anti-Rabbit IgG(H+L)