

SCML2 antibody



Catalog Number: 115003

Product name

SCML2 antibody

IHC: 1:20-1:200

IF: 1:20-1:200

Specificity

Human, Mouse; other species not tested.

Antibody description

SCML2 Rabbit Polyclonal antibody. Positive IHC detected in human testis tissue, human placenta tissue. Positive IF detected in HEK-293 cells. Positive WB detected in K-562 cells, HEK-293 cells, mouse testis tissue. Observed molecular weight by Western-blot: 70 kDa

Preparation

This antibody was obtained by immunization of SCML2 recombinant protein (Accession Number: NM_006089). Purification method: Antigen affinity purified.

Formulation

PBS with 0.1% sodium azide and 50% glycerol pH 7.3.

Storage

Store at -20°C. DO NOT ALIQUOT

Clonality

Polyclonal

Ig Type

Rabbit IgG

Applications

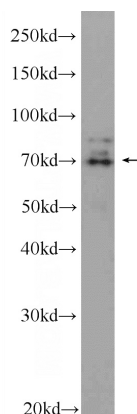
ELISA, WB, IHC, IF

Dilutions

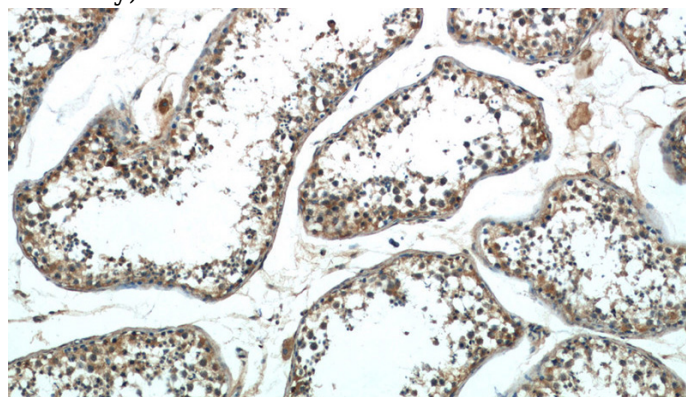
Recommended Dilution:

WB: 1:200-1:1000

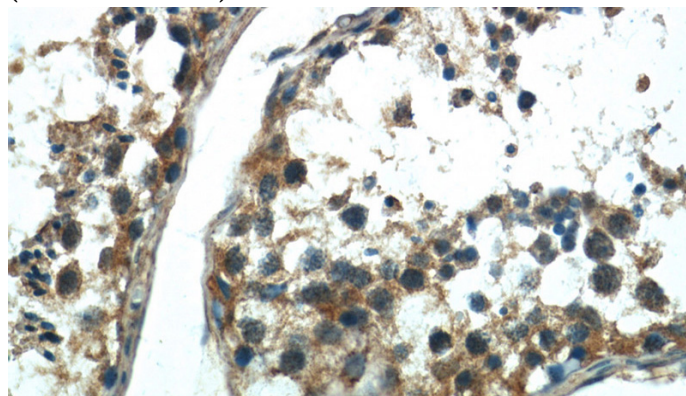
Validations



K-562 cells were subjected to SDS PAGE followed by western blot with Catalog No:115003(SCML2 Antibody) at dilution of 1:300



Immunohistochemistry of paraffin-embedded human testis tissue slide using Catalog No:115003(SCML2 Antibody) at dilution of 1:50 (under 10x lens)



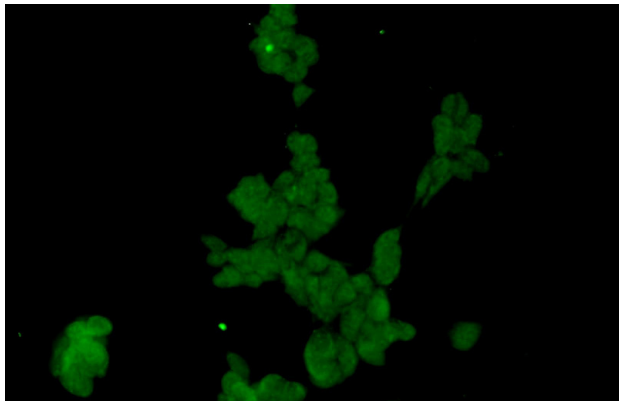
Immunohistochemistry of paraffin-embedded

SCML2 antibody



Catalog Number: 115003

human testis tissue slide using Catalog No:115003(SCML2 Antibody) at dilution of 1:50 (under 40x lens)



Immunofluorescent analysis of HEK-293 cells using Catalog No:115003(SCML2 Antibody) at dilution of 1:50 and Alexa Fluor 488-conjugated AffiniPure Goat Anti-Rabbit IgG(H+L)