

SCML1 antibody



Catalog Number: 115002

Product name

SCML1 antibody

Specificity

Human, Mouse; other species not tested.

Antibody description

SCML1 Rabbit Polyclonal antibody. Positive IF detected in HepG2 cells. Positive WB detected in HepG2 cells, mouse liver tissue. Observed molecular weight by Western-blot: 23kd

Preparation

This antibody was obtained by immunization of SCML1 recombinant protein (Accession Number: XM_017029723). Purification method: Antigen affinity purified.

Formulation

PBS with 0.02% sodium azide and 50% glycerol pH 7.3.

Storage

Store at -20°C. DO NOT ALIQUOT

Clonality

Polyclonal

Ig Type

Rabbit IgG

Applications

ELISA, WB, IF

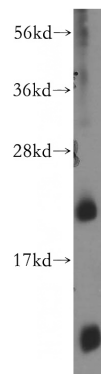
Dilutions

Recommended Dilution:

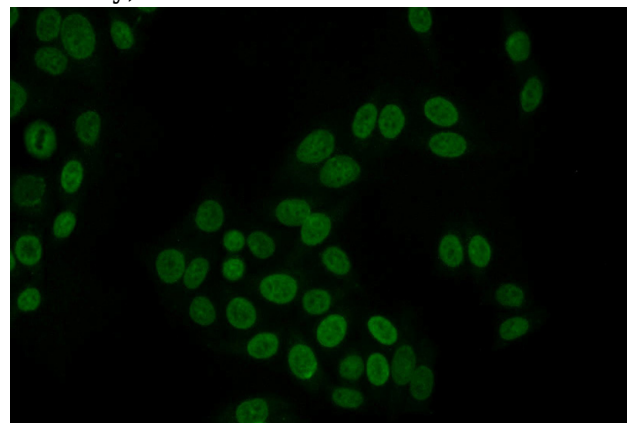
WB: 1:500-1:5000

IF: 1:10-1:100

Validations



HepG2 cells were subjected to SDS PAGE followed by western blot with Catalog No:115002(SCML1 antibody) at dilution of 1:400



Immunofluorescent analysis of HepG2 cells using Catalog No:115002(SCML1 Antibody) at dilution of 1:25 and Alexa Fluor 488-conjugated AffiniPure Goat Anti-Rabbit IgG(H+L)