

SCFD2 antibody



Catalog Number: 114992

Product name

SCFD2 antibody

IP: 1:200-1:1000

IHC: 1:20-1:200

Specificity

Human, Mouse, Rat; other species not tested.

Antibody description

SCFD2 Rabbit Polyclonal antibody. Positive WB detected in COLO 320 cells, mouse kidney tissue. Positive IP detected in COLO 320 cells. Positive IHC detected in human colon cancer tissue, human colon tissue. Observed molecular weight by Western-blot: 75 kDa

Preparation

This antibody was obtained by immunization of SCFD2 recombinant protein (Accession Number: NM_152540). Purification method: Antigen affinity purified.

Formulation

PBS with 0.02% sodium azide and 50% glycerol pH 7.3.

Storage

Store at -20°C. DO NOT ALIQUOT

Clonality

Polyclonal

Ig Type

Rabbit IgG

Applications

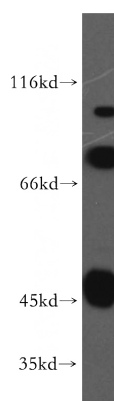
ELISA, WB, IHC, IP

Dilutions

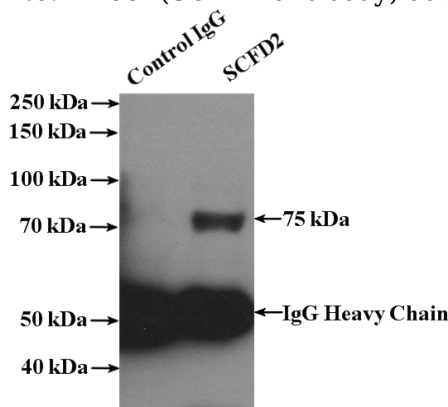
Recommended Dilution:

WB: 1:200-1:2000

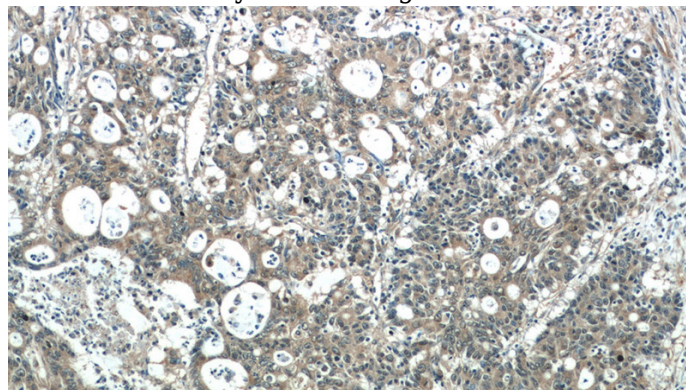
Validations



COLO 320 cells were subjected to SDS PAGE followed by western blot with Catalog No:114992(SCFD2 antibody) at dilution of 1:200



IP Result of anti-SCFD2 (IP:Catalog No:114992, 4ug; Detection:Catalog No:114992 1:200) with COLO 320 cells lysate 3200ug.

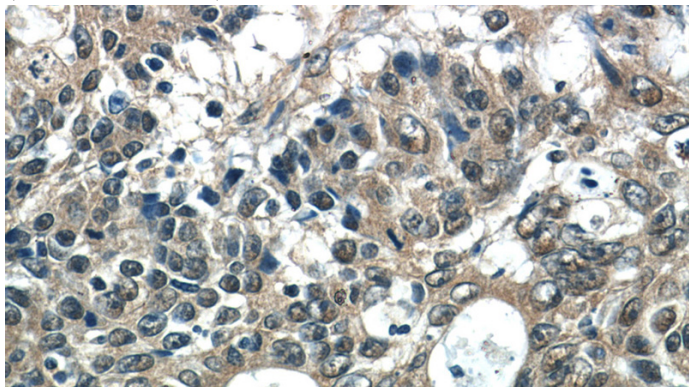


Immunohistochemistry of paraffin-embedded human colon cancer tissue slide using Catalog

SCFD2 antibody

Catalog Number: 114992

No:114992(SCFD2 Antibody) at dilution of 1:50
(under 10x lens)



Immunohistochemistry of paraffin-embedded
human colon cancer tissue slide using Catalog
No:114992(SCFD2 Antibody) at dilution of 1:50
(under 40x lens)