

SCCPDH antibody

Catalog Number: 114988

Product name

SCCPDH antibody

Specificity

Human, Mouse; other species not tested.

Antibody description

SCCPDH Rabbit Polyclonal antibody. Positive IP detected in COLO 320 cells. Positive WB detected in COLO 320 cells, HepG2 cells. Observed molecular weight by Western-blot: 40-47 kDa

Preparation

This antibody was obtained by immunization of SCCPDH recombinant protein (Accession Number: NM_016002). Purification method: Antigen affinity purified.

Formulation

PBS with 0.1% sodium azide and 50% glycerol pH 7.3.

Storage

Store at -20°C. DO NOT ALIQUOT

Clonality

Polyclonal

Ig Type

Rabbit IgG

Applications

ELISA, IP, WB

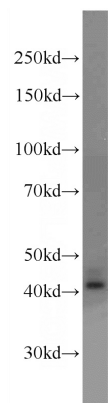
Dilutions

Recommended Dilution:

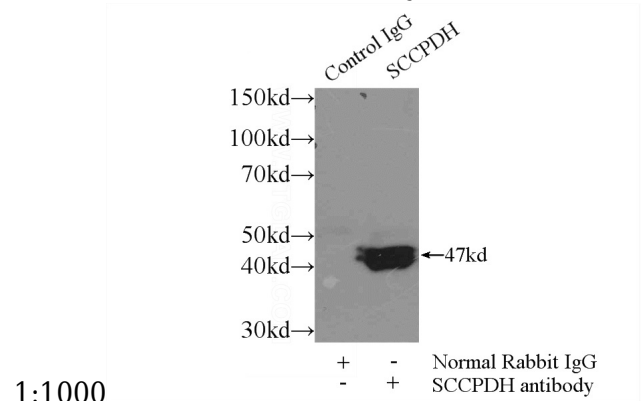
WB: 1:500-1:5000

IP: 1:200-1:1000

Validations



COLO 320 cells were subjected to SDS PAGE followed by western blot with Catalog No:114988(SCCPDH Antibody) at dilution of



1:1000

IP Result of anti-SCCPDH (IP:Catalog No:114988, 3ug; Detection:Catalog No:114988 1:300) with COLO 320 cells lysate 1700ug.