

# SCAMP1 antibody



Catalog Number: 114982

## Product name

SCAMP1 antibody

## Specificity

human, mouse, rat; other species not tested.

## Antibody description

SCAMP1 Rabbit Polyclonal antibody. Positive WB detected in mouse brain tissue, HeLa cells, human brain tissue, mouse pancreas tissue. Positive IHC detected in human brain. Observed molecular weight by Western-blot: 37kd

## Preparation

This antibody was obtained by immunization of SCAMP1 recombinant protein (Accession Number: NM\_004866). Purification method: Antigen affinity purified.

## Formulation

PBS with 0.02% sodium azide and 50% glycerol pH 7.3.

## Storage

Store at -20°C. DO NOT ALIQUOT

## Clonality

Polyclonal

## Ig Type

Rabbit IgG

## Applications

ELISA, WB, IHC

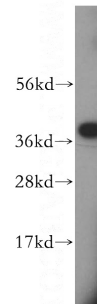
## Dilutions

Recommended Dilution:

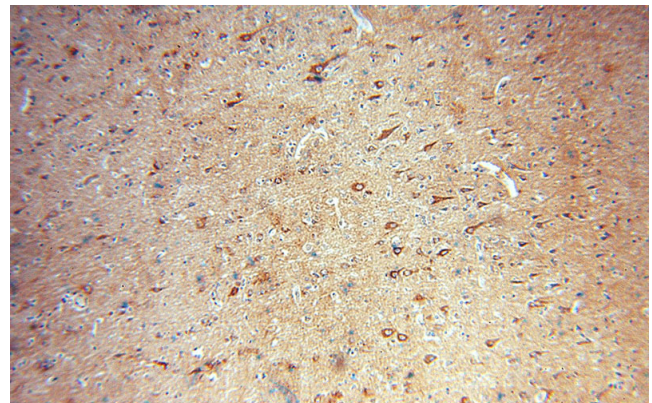
WB: 1:500-1:5000

IHC: 1:20-1:200

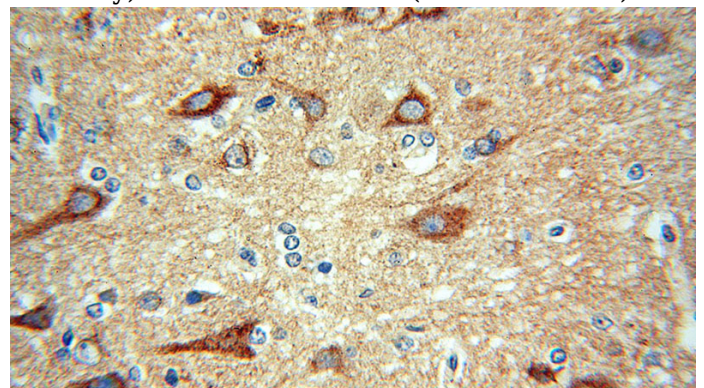
## Validations



mouse brain tissue were subjected to SDS PAGE followed by western blot with Catalog No:114982(SCAMP1 antibody) at dilution of 1:1500



Immunohistochemical of paraffin-embedded human brain using Catalog No:114982(SCAMP1 antibody) at dilution of 1:100 (under 10x lens)



Immunohistochemical of paraffin-embedded human brain using Catalog No:114982(SCAMP1 antibody) at dilution of 1:100 (under 40x lens)