

SAT2 antibody



Catalog Number: 114976

Product name

SAT2 antibody

Specificity

Human, Mouse, Rat; other species not tested.

Antibody description

SAT2 Rabbit Polyclonal antibody. Positive WB detected in mouse ovary tissue. Positive IHC detected in human cervix tissue.

Preparation

This antibody was obtained by immunization of SAT2 recombinant protein (Accession Number: NM_133491). Purification method: Antigen affinity purified.

Formulation

PBS with 0.02% sodium azide and 50% glycerol pH 7.3.

Storage

Store at -20°C. DO NOT ALIQUOT

Clonality

Polyclonal

Ig Type

Rabbit IgG

Applications

ELISA, IHC, WB

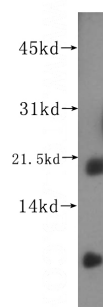
Dilutions

Recommended Dilution:

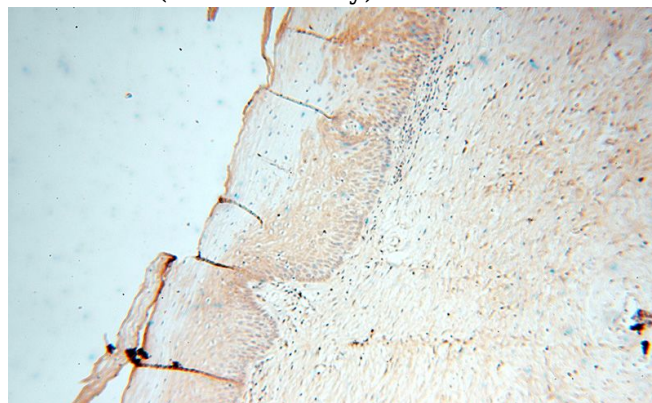
WB: 1:200-1:2000

IHC: 1:20-1:200

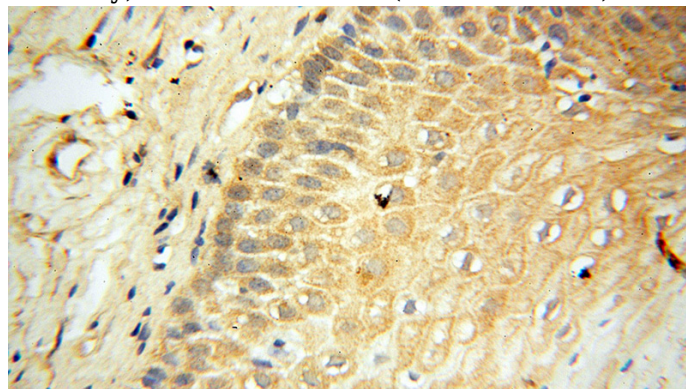
Validations



mouse ovary tissue were subjected to SDS PAGE followed by western blot with Catalog No:114976(SAT2 antibody) at dilution of 1:500



Immunohistochemical of paraffin-embedded human cervix using Catalog No:114976(SAT2 antibody) at dilution of 1:50 (under 10x lens)



Immunohistochemical of paraffin-embedded human cervix using Catalog No:114976(SAT2 antibody) at dilution of 1:50 (under 40x lens)