

S100A5 antibody

Catalog Number: 114962

Product name

S100A5 antibody

IHC: 1:20-1:200

IF: 1:20-1:200

Specificity

Human, Mouse, Rat; other species not tested.

Antibody description

S100A5 Rabbit Polyclonal antibody. Positive WB detected in HepG2 cells, human kidney tissue, human liver tissue, SH-SY5Y cells. Positive IF detected in HepG2 cells. Positive IHC detected in human brain tissue. Observed molecular weight by Western-blot: 11 kDa

Preparation

This antibody was obtained by immunization of S100A5 recombinant protein (Accession Number: XM_017002030). Purification method: Antigen affinity purified.

Formulation

PBS with 0.02% sodium azide and 50% glycerol pH 7.3.

Storage

Store at -20°C. DO NOT ALIQUOT

Clonality

Polyclonal

Ig Type

Rabbit IgG

Applications

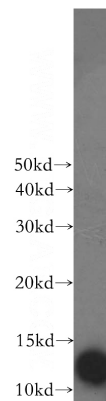
ELISA, WB, IHC, IF

Dilutions

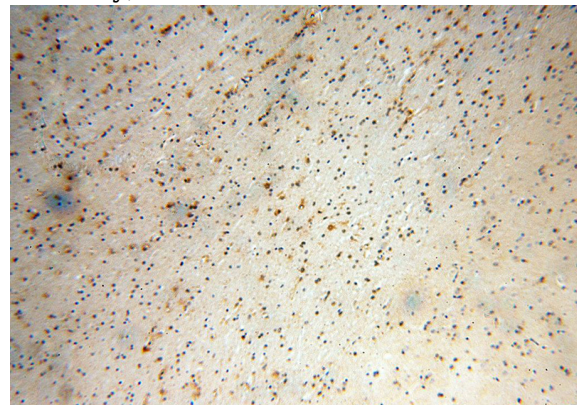
Recommended Dilution:

WB: 1:500-1:5000

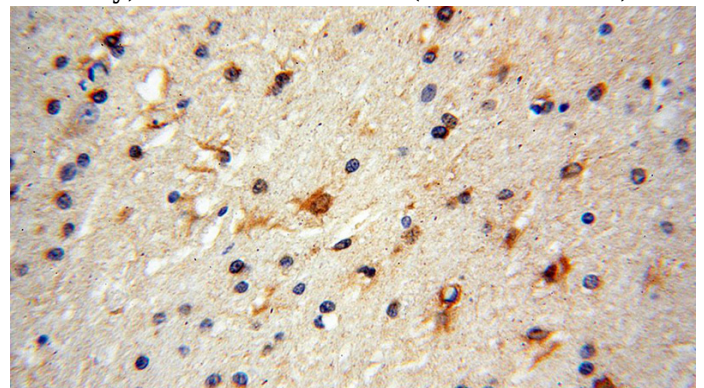
Validations



HepG2 cells were subjected to SDS PAGE followed by western blot with Catalog No:114962(S100A5 antibody) at dilution of 1:500



Immunohistochemical of paraffin-embedded human brain using Catalog No:114962(S100A5 antibody) at dilution of 1:100 (under 10x lens)

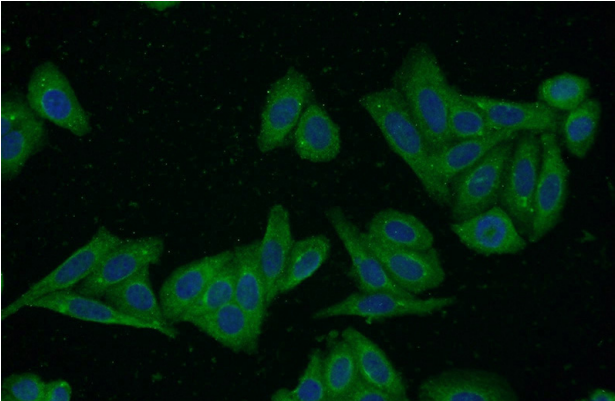


Immunohistochemical of paraffin-embedded human brain using Catalog No:114962(S100A5

S100A5 antibody

Catalog Number: 114962

antibody) at dilution of 1:100 (under 40x lens)



Immunofluorescent analysis of HepG2 cells using Catalog No:114962(S100A5 Antibody) at dilution of 1:50 and Alexa Fluor 488-conjugated AffiniPure Goat Anti-Rabbit IgG(H+L)