

RYBP antibody

Catalog Number: 114950

Product name

RYBP antibody

Specificity

Human, Mouse, Rat; other species not tested.

Antibody description

RYBP Rabbit Polyclonal antibody. Positive IP detected in mouse spleen tissue. Positive WB detected in K-562 cells. Observed molecular weight by Western-blot: 32 kDa

Preparation

This antibody was obtained by immunization of RYBP recombinant protein (Accession Number: NM_012234). Purification method: Antigen affinity purified.

Formulation

PBS with 0.1% sodium azide and 50% glycerol pH 7.3.

Storage

Store at -20°C. DO NOT ALIQUOT

Clonality

Polyclonal

Ig Type

Rabbit IgG

Applications

ELISA, WB, IP

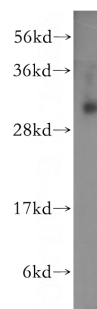
Dilutions

Recommended Dilution:

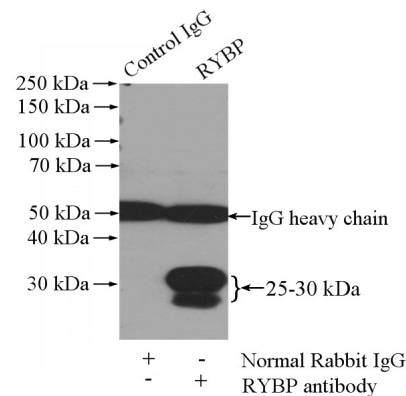
WB: 1:200-1:2000

IP: 1:200-1:1000

Validations



K-562 cells were subjected to SDS PAGE followed by western blot with Catalog No:114950(RYBP antibody) at dilution of 1:500



IP Result of anti-RYBP (IP:Catalog No:114950, 4ug; Detection:Catalog No:114950 1:300) with mouse spleen tissue lysate 4000ug.