

RXRA antibody



Catalog Number: 114945

Product name

RXRA antibody

Recommended Dilution:

WB: 1:200-1:2000

Immunogen

IP: 1:200-1:2000

[Human RXRA Recombinant protein \(GST tag\)](#)

IHC: 1:20-1:200

Specificity

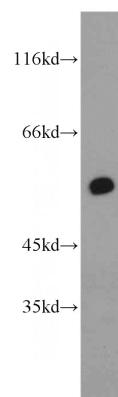
IF: 1:10-1:100

Human, Mouse, Rat; other species not tested.

Validations

Antibody description

RXRA Rabbit Polyclonal antibody. Positive IF detected in Hela cells. Positive IHC detected in human kidney tissue. Positive IP detected in MCF-7 cells. Positive WB detected in MCF7 cells, rat liver tissue. Observed molecular weight by Western-blot: 50-54 kDa



Preparation

This antibody was obtained by immunization of RXRA recombinant protein (Accession Number: NM_002957). Purification method: Antigen affinity purified.

MCF7 cells were subjected to SDS PAGE followed by western blot with Catalog No:114945(RXRA antibody) at dilution of 1:600

Formulation

PBS with 0.02% sodium azide and 50% glycerol pH 7.3.

Storage

Store at -20°C. DO NOT ALIQUOT

Clonality

Polyclonal

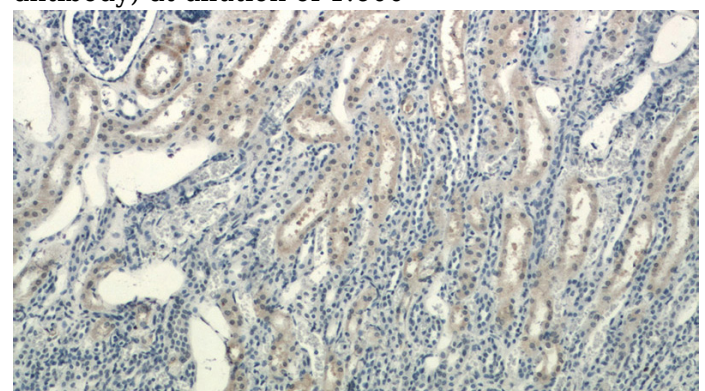
Ig Type

Rabbit IgG

Applications

ELISA, WB, IF, IHC, IP

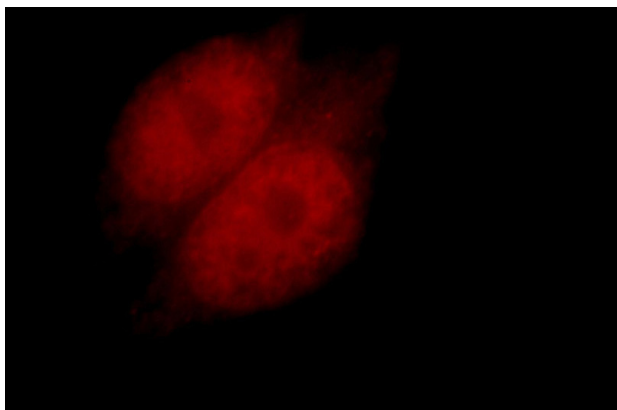
Dilutions



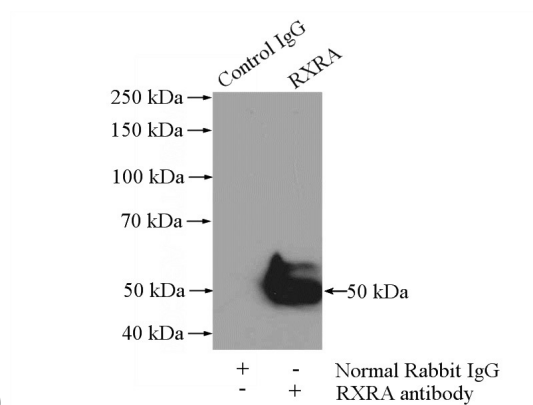
Immunohistochemical of paraffin-embedded human kidney using Catalog No:114945(RXRA antibody) at dilution of 1:200 (under 10x lens)

RXRA antibody

Catalog Number: 114945



Immunofluorescent analysis of HeLa cells, using RXRA antibody Catalog No:114945 at 1:25 dilution and Rhodamine-labeled goat anti-rabbit



IgG (red).

IP Result of anti-RXRA (IP:Catalog No:114945, 4ug; Detection:Catalog No:114945 1:600) with MCF-7 cells lysate 800ug.