

RUNX1 antibody



Catalog Number: 114935

Product name

RUNX1 antibody

Specificity

Human, Mouse, Rat; other species not tested.

Antibody description

RUNX1 Rabbit Polyclonal antibody. Positive WB detected in mouse liver tissue, HEK-293 cells, HL-60 cells, Jurkat cells, MCF7 cells, mouse spleen tissue, mouse thymus tissue, Raji cells, SH-SY5Y cells, Sp2/0 cells. Positive IP detected in mouse liver tissue. Observed molecular weight by Western-blot: 52-55 kDa

Preparation

This antibody was obtained by immunization of Peptide (Accession Number: NM_001754).
Purification method: Antigen affinity purified.

Formulation

PBS with 0.1% sodium azide and 50% glycerol pH 7.3.

Storage

Store at -20°C. DO NOT ALIQUOT

Clonality

Polyclonal

Ig Type

Rabbit IgG

Applications

ELISA, WB, IP

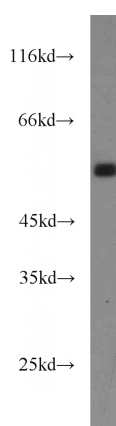
Dilutions

Recommended Dilution:

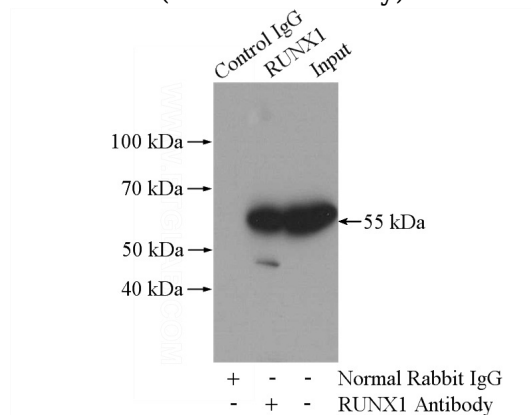
WB: 1:200-1:2000

IP: 1:200-1:2000

Validations



mouse liver tissue were subjected to SDS PAGE followed by western blot with Catalog No:114935(RUNX1 antibody) at dilution of 1:500



IP Result of anti-RUNX1 (IP:Catalog No:114935, 4ug; Detection:Catalog No:114935 1:500) with mouse liver tissue lysate 4000ug.