

RS1 antibody



Catalog Number: 114932

Product name

RS1 antibody

Specificity

Human, Mouse; other species not tested.

Antibody description

RS1 Rabbit Polyclonal antibody. Positive WB detected in mouse eye tissue. Observed molecular weight by Western-blot: 26 kDa

Preparation

This antibody was obtained by immunization of RS1 recombinant protein (Accession Number: NM_000330). Purification method: Antigen affinity purified.

Formulation

PBS with 0.1% sodium azide and 50% glycerol pH 7.3.

Storage

Store at -20°C. DO NOT ALIQUOT

Clonality

Polyclonal

Ig Type

Rabbit IgG

Applications

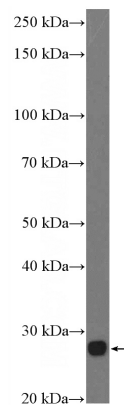
ELISA, WB

Dilutions

Recommended Dilution:

WB: 1:200-1:2000

Validations



mouse eye tissue were subjected to SDS PAGE followed by western blot with Catalog No:114932(RS1 Antibody) at dilution of 1:600