

RRS1 antibody

Catalog Number: 114931

Product name

RRS1 antibody

Specificity

Human, Mouse, Rat; other species not tested.

Antibody description

RRS1 Rabbit Polyclonal antibody. Positive IP detected in K-562 cells. Positive WB detected in K-562 cells, HeLa cells, rat liver tissue. Observed molecular weight by Western-blot: 41 kDa

Preparation

This antibody was obtained by immunization of RRS1 recombinant protein (Accession Number: NM_015169). Purification method: Antigen affinity purified.

Formulation

PBS with 0.02% sodium azide and 50% glycerol pH 7.3.

Storage

Store at -20°C. DO NOT ALIQUOT

Clonality

Polyclonal

Ig Type

Rabbit IgG

Applications

ELISA, WB, IP

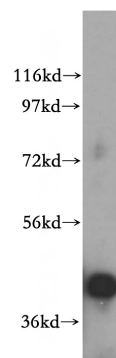
Dilutions

Recommended Dilution:

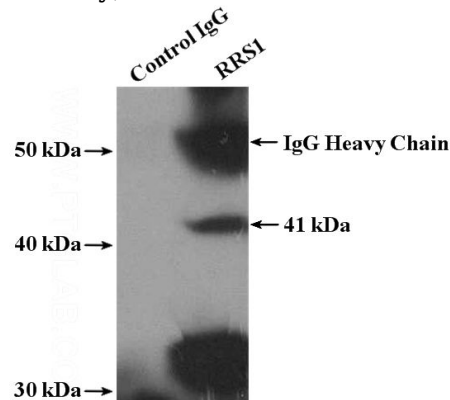
WB: 1:200-1:2000

IP: 1:200-1:2000

Validations



K-562 cells were subjected to SDS PAGE followed by western blot with Catalog No:114931(RRS1 antibody) at dilution of 1:500



IP Result of anti-RRS1 (IP:Catalog No:114931, 4ug; Detection:Catalog No:114931 1:800) with K-562 cells lysate 3200ug.