

# RRP8 antibody



Catalog Number: 114930

## Product name

RRP8 antibody

IHC: 1:20-1:200

IF: 1:10-1:100

## Specificity

Human, Mouse, Rat; other species not tested.

## Antibody description

RRP8 Rabbit Polyclonal antibody. Positive IHC detected in human skin tissue. Positive IF detected in Hela cells. Positive WB detected in human brain tissue. Observed molecular weight by Western-blot: 51 kDa

## Preparation

This antibody was obtained by immunization of RRP8 recombinant protein (Accession Number: NM\_015324). Purification method: Antigen affinity purified.

## Formulation

PBS with 0.02% sodium azide and 50% glycerol pH 7.3.

## Storage

Store at -20°C. DO NOT ALIQUOT

## Clonality

Polyclonal

## Ig Type

Rabbit IgG

## Applications

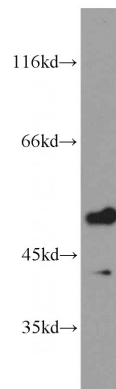
ELISA, WB, IF, IHC

## Dilutions

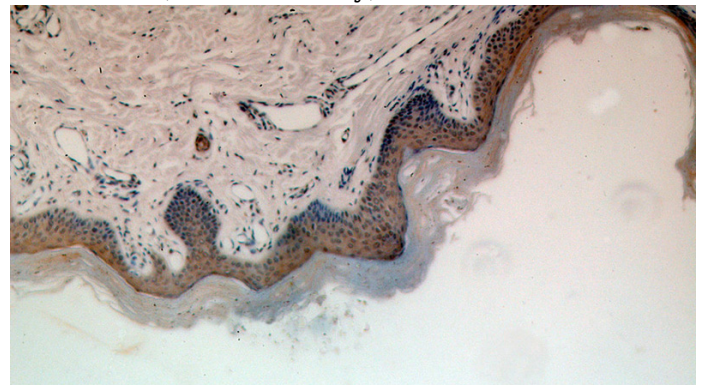
Recommended Dilution:

WB: 1:500-1:5000

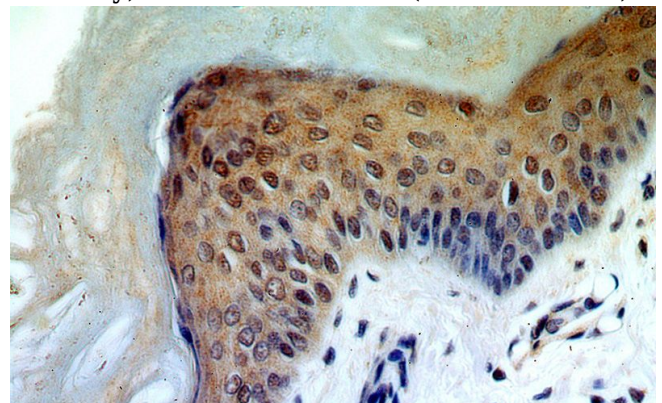
## Validations



human brain tissue were subjected to SDS PAGE followed by western blot with Catalog No:114930(RRP8 antibody) at dilution of 1:1500



Immunohistochemical of paraffin-embedded human skin using Catalog No:114930(RRP8 antibody) at dilution of 1:100 (under 10x lens)



Immunohistochemical of paraffin-embedded human skin using Catalog No:114930(RRP8

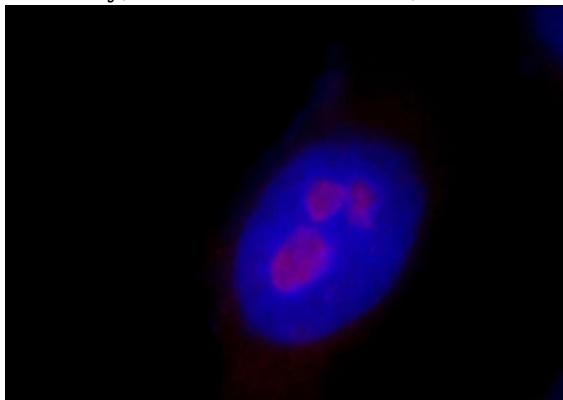
# RRP8 antibody



Catalog Number: 114930

---

antibody) at dilution of 1:100 (under 40x lens)



Immunofluorescent analysis of HeLa cells, using RRP8 antibody Catalog No:114930 at 1:25 dilution and Rhodamine-labeled goat anti-rabbit IgG (red). Blue pseudocolor = DAPI (fluorescent DNA dye).