

RRM1 antibody

Catalog Number: 114923

Product name

RRM1 antibody

Specificity

Human, Mouse, Rat, Monkey; other species not tested.

Antibody description

RRM1 Rabbit Polyclonal antibody. Positive WB detected in HeLa cells, A549, A549 cells, BxPC-3 cells, K-562 cells, rat skeletal muscle tissue. Positive IP detected in K-562 cells. Positive FC detected in HeLa cells. Positive IHC detected in human lung cancer tissue. Positive IF detected in HeLa cells, HepG2 cells, MCF-7 cells. Observed molecular weight by Western-blot: 90 kDa

Preparation

This antibody was obtained by immunization of RRM1 recombinant protein (Accession Number: NM_001033). Purification method: Antigen affinity purified.

Formulation

PBS with 0.1% sodium azide and 50% glycerol pH 7.3.

Storage

Store at -20°C. DO NOT ALIQUOT

Clonality

Polyclonal

Ig Type

Rabbit IgG

Applications

ELISA, IP, WB, IF, FC, IHC

Dilutions

Recommended Dilution:

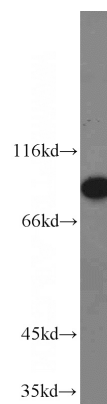
WB: 1:1000-1:10000

IP: 1:200-1:2000

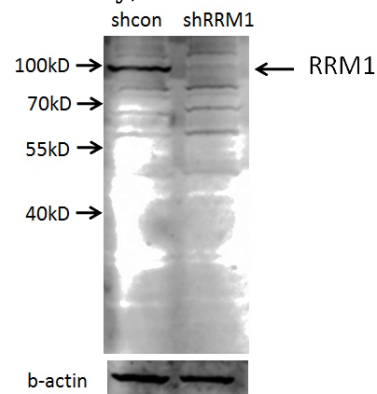
IHC: 1:20-1:200

IF: 1:20-1:200

Validations



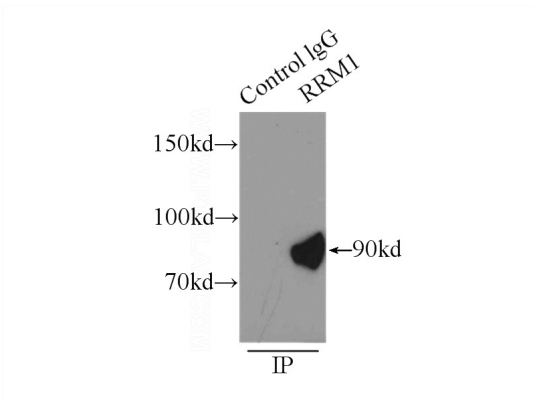
HeLa cells were subjected to SDS PAGE followed by western blot with Catalog No:114923(RRM1 antibody) at dilution of 1:2000



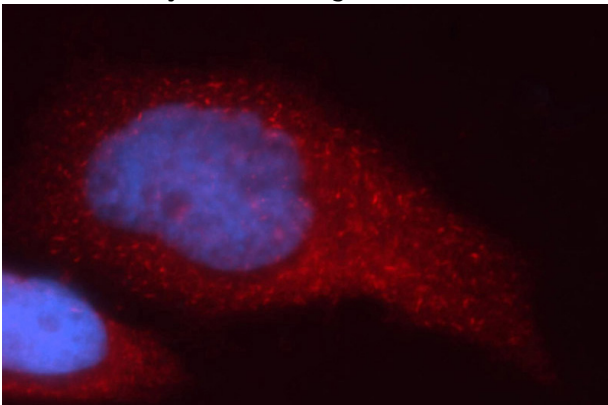
A549 cells (shcontrol and shRNA of RRM1) were subjected to SDS PAGE followed by western blot with Catalog No:114923 (RRM1 antibody) at dilution of 1:2000. (Data provided by Angran Biotech (www.miRNAlab.com)).

RRM1 antibody

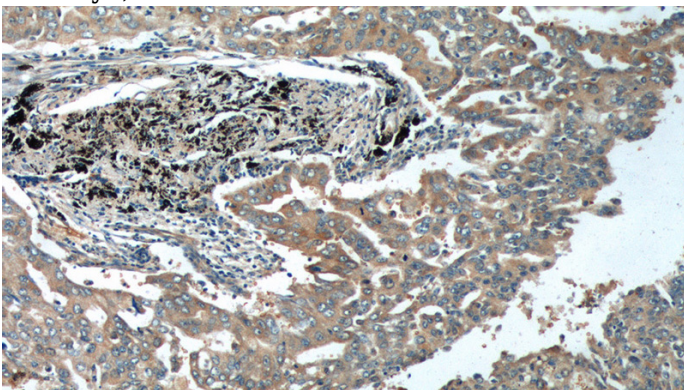
Catalog Number: 114923



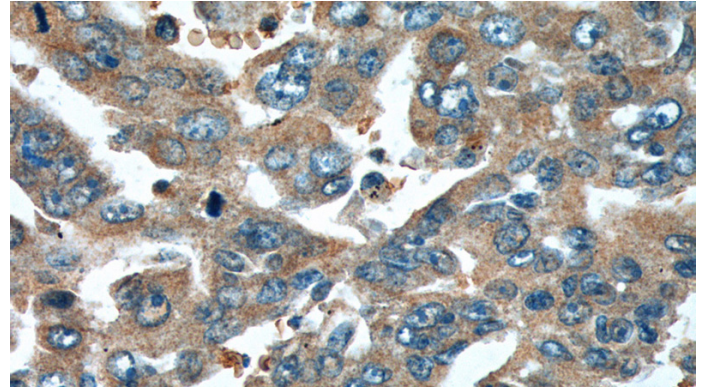
IP Result of anti-RRM1 (IP:Catalog No:114923, 5ug; Detection:Catalog No:114923 1:800) with K-562 cells lysate 8000ug.



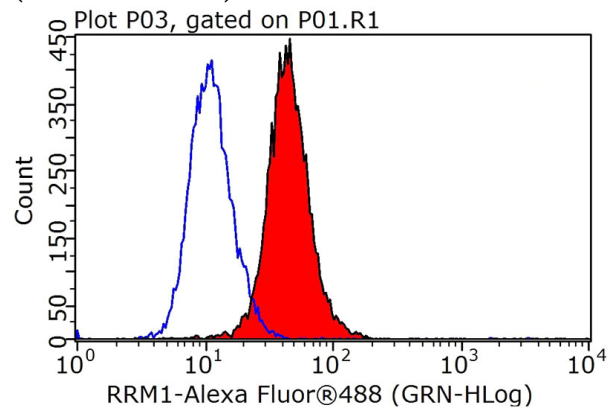
Immunofluorescent analysis of HeLa cells, using RRM1 antibody Catalog No:114923 at 1:50 dilution and Rhodamine-labeled goat anti-rabbit IgG (red). Blue pseudocolor = DAPI (fluorescent DNA dye).



Immunohistochemistry of paraffin-embedded human lung cancer tissue slide using Catalog No:114923(RRM1 Antibody) at dilution of 1:200 (under 10x lens).



Immunohistochemistry of paraffin-embedded human lung cancer tissue slide using Catalog No:114923(RRM1 Antibody) at dilution of 1:200 (under 40x lens).



1X10⁶ HeLa cells were stained with .2ug RRM1 antibody (Catalog No:114923, red) and control antibody (blue). Fixed with 4% PFA blocked with 3% BSA (30 min). Alexa Fluor 488-conjugated AffiniPure Goat Anti-Rabbit IgG(H+L) with dilution 1:1000.