

# RPS8 antibody



Catalog Number: 114916

## Product name

RPS8 antibody

## Specificity

Human, Mouse, Rat; other species not tested.

## Antibody description

RPS8 Rabbit Polyclonal antibody. Positive WB detected in mouse liver tissue, A375 cells, HeLa cells, mouse pancreas tissue, PC-3 cells. Positive IF detected in A375 cells. Observed molecular weight by Western-blot: 25-28 kDa

## Preparation

This antibody was obtained by immunization of RPS8 recombinant protein (Accession Number: NM\_001012). Purification method: Antigen affinity purified.

## Formulation

PBS with 0.1% sodium azide and 50% glycerol pH 7.3.

## Storage

Store at -20°C. DO NOT ALIQUOT

## Clonality

Polyclonal

## Ig Type

Rabbit IgG

## Applications

ELISA, WB, IF

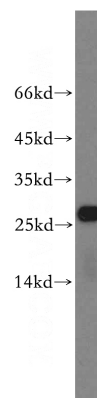
## Dilutions

Recommended Dilution:

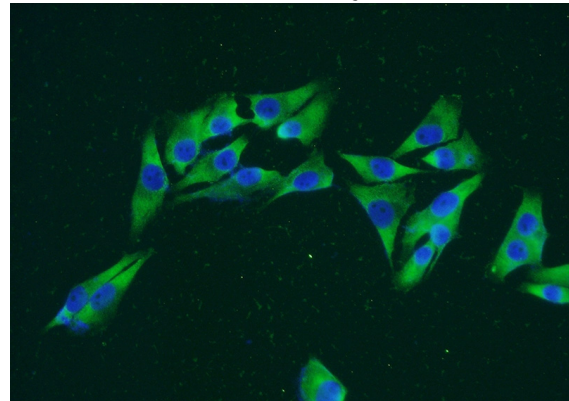
WB: 1:500-1:5000

IF: 1:20-1:200

## Validations



mouse liver tissue were subjected to SDS PAGE followed by western blot with Catalog No:114916(RPS8 antibody) at dilution of 1:600



Immunofluorescent analysis of A375 cells using Catalog No:114916(RPS8 Antibody) at dilution of 1:50 and Alexa Fluor 488-conjugated AffiniPure Goat Anti-Rabbit IgG(H+L)