

RPS6 antibody



Catalog Number: 114911

Product name

RPS6 antibody

Specificity

Human, Mouse, Rat; other species not tested.

Antibody description

RPS6 Rabbit Polyclonal antibody. Positive WB detected in K-562 cells, MCF7 cells. Positive IP detected in MCF-7 cells. Observed molecular weight by Western-blot: 29 kDa

Preparation

This antibody was obtained by immunization of RPS6 recombinant protein (Accession Number: NM_001010). Purification method: Antigen affinity purified.

Formulation

PBS with 0.02% sodium azide and 50% glycerol pH 7.3.

Storage

Store at -20°C. DO NOT ALIQUOT

Clonality

Polyclonal

Ig Type

Rabbit IgG

Applications

ELISA, WB, IP

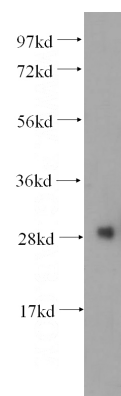
Dilutions

Recommended Dilution:

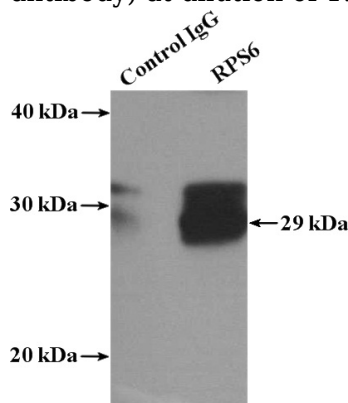
WB: 1:200-1:2000

IP: 1:200-1:1000

Validations



K-562 cells were subjected to SDS PAGE followed by western blot with Catalog No:114911(RPS6 antibody) at dilution of 1:500



IP Result of anti-RPS6 (IP:Catalog No:114911, 4ug; Detection:Catalog No:114911 1:400) with MCF-7 cells lysate 1040ug.