

# RPS5 antibody

Catalog Number: 114910

## Product name

RPS5 antibody

## Specificity

Human, Mouse, Rat; other species not tested.

## Antibody description

RPS5 Rabbit Polyclonal antibody. Positive WB detected in HeLa cells, HepG2 cells, mouse liver tissue, rat liver tissue. Positive IF detected in HepG2 cells. Observed molecular weight by Western-blot: 23 kDa

## Preparation

This antibody was obtained by immunization of RPS5 recombinant protein (Accession Number: NM\_001009). Purification method: Antigen affinity purified.

## Formulation

PBS with 0.02% sodium azide and 50% glycerol pH 7.3.

## Storage

Store at -20°C. DO NOT ALIQUOT

## Clonality

Polyclonal

## Ig Type

Rabbit IgG

## Applications

ELISA, WB, IF

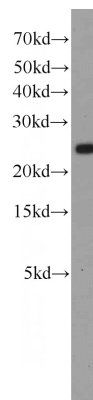
## Dilutions

Recommended Dilution:

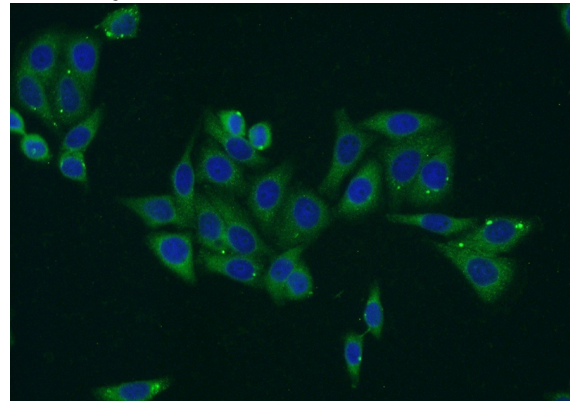
WB: 1:200-1:2000

IF: 1:20-1:200

## Validations



HeLa cells were subjected to SDS PAGE followed by western blot with Catalog No:114910(RPS5 antibody) at dilution of 1:600



Immunofluorescent analysis of HepG2 cells using Catalog No:114910(RPS5 Antibody) at dilution of 1:50 and Alexa Fluor 488-conjugated AffiniPure Goat Anti-Rabbit IgG(H+L)