

RPS3A antibody



Catalog Number: 114907

Product name

RPS3A antibody

Recommended Dilution:

WB: 1:200-1:2000

Specificity

Human, Mouse, Rat; other species not tested.

IP: 1:200-1:2000

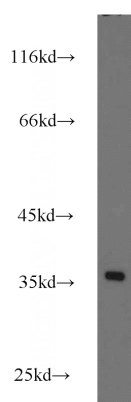
IHC: 1:20-1:200

Antibody description

RPS3A Rabbit Polyclonal antibody. Positive IF detected in HepG2 cells. Positive IHC detected in human pancreas cancer tissue. Positive FC detected in HepG2 cells. Positive WB detected in HeLa cells, A431 cells, A549 cells, HepG2 cells, Jurkat cells, Raji cells. Positive IP detected in HepG2 cells. Observed molecular weight by Western-blot: 35kd

IF: 1:20-1:200

Validations



Preparation

This antibody was obtained by immunization of RPS3A recombinant protein (Accession Number: NM_001006). Purification method: Antigen affinity purified.

HeLa cells were subjected to SDS PAGE followed by western blot with Catalog No:114907(RPS3A antibody) at dilution of 1:800

Formulation

PBS with 0.02% sodium azide and 50% glycerol pH 7.3.

Storage

Store at -20°C. DO NOT ALIQUOT

Clonality

Polyclonal

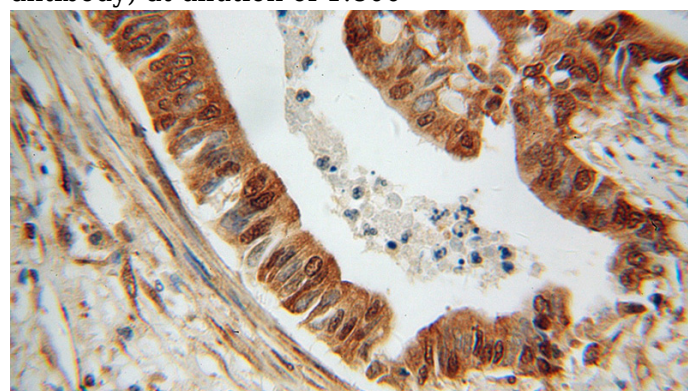
Ig Type

Rabbit IgG

Applications

ELISA, WB, IHC, IF, FC, IP

Dilutions

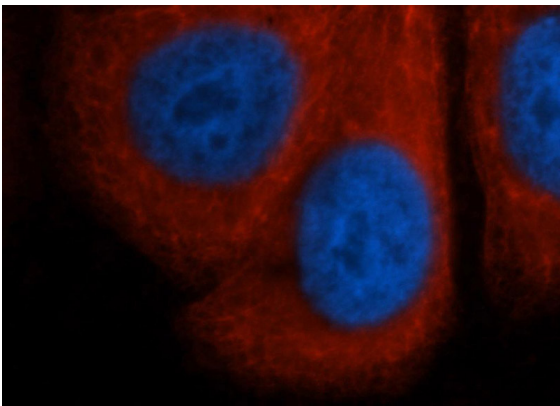


Immunohistochemical of paraffin-embedded human pancreas cancer using Catalog No:114907(RPS3A antibody) at dilution of 1:100 (under 40x lens)

RPS3A antibody

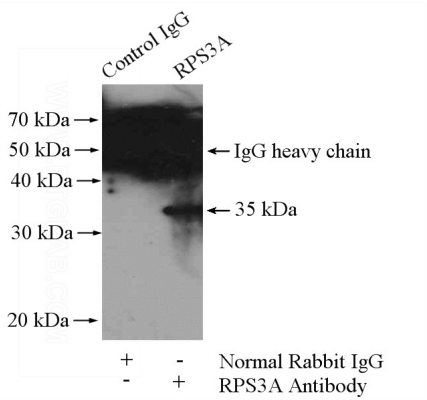


Catalog Number: 114907

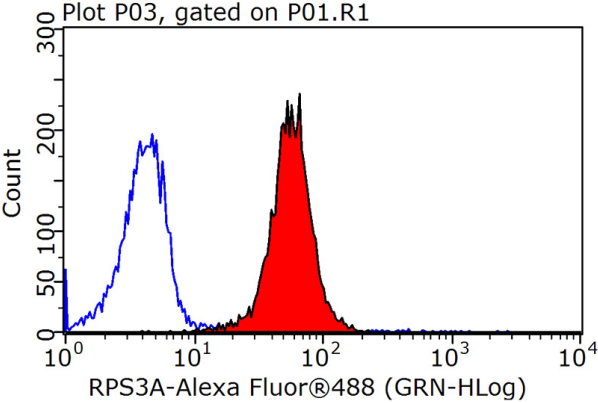


Immunofluorescent analysis of HepG2 cells, using RPS3A antibody Catalog No:114907 at 1:50 dilution and Rhodamine-labeled goat anti-rabbit IgG (red). Blue pseudocolor = DAPI (fluorescent

DNA dye).



IP Result of anti-RPS3A (IP:Catalog No:114907, 4ug; Detection:Catalog No:114907 1:500) with HepG2 cells lysate 3600ug.



1X10⁶ HepG2 cells were stained with 0.2ug RPS3A antibody (Catalog No:114907, red) and control antibody (blue). Fixed with 90% MeOH blocked with 3% BSA (30 min). Alexa Fluor 488-conjugated AffiniPure Goat Anti-Rabbit IgG(H+L) with dilution 1:1500.