

RPLP1 antibody

Catalog Number: 114906

Product name

RPLP1 antibody

Immunogen

[Human RPLP1 Recombinant protein \(GST tag\)](#)

Specificity

Human; other species not tested.

Antibody description

RPLP1 Rabbit Polyclonal antibody. Positive WB detected in HeLa cells, HepG2 cells. Positive IF detected in HepG2 cells. Positive IHC detected in human colon tissue, human kidney tissue. Observed molecular weight by Western-blot: 15-20 kDa

Preparation

This antibody was obtained by immunization of RPLP1 recombinant protein (Accession Number: NM_001003). Purification method: Antigen affinity purified.

Formulation

PBS with 0.1% sodium azide and 50% glycerol pH 7.3.

Storage

Store at -20°C. DO NOT ALIQUOT

Clonality

Polyclonal

Ig Type

Rabbit IgG

Applications

ELISA, IHC, IF, WB

Dilutions

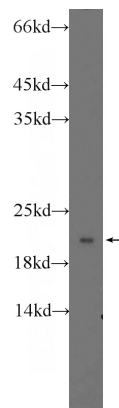
Recommended Dilution:

WB: 1:500-1:5000

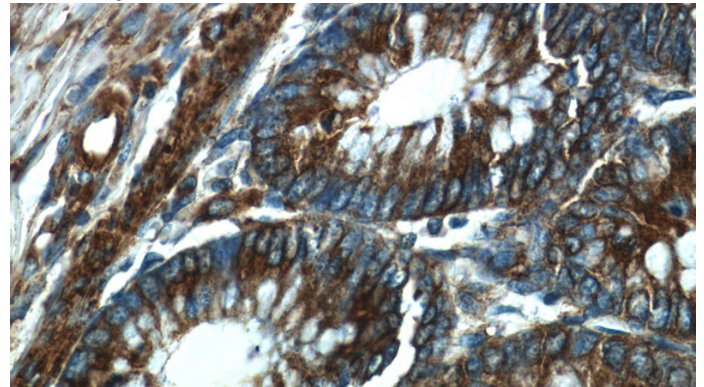
IHC: 1:20-1:200

IF: 1:20-1:200

Validations



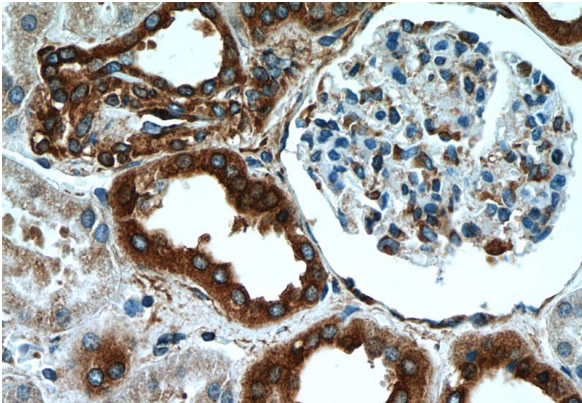
HeLa cells were subjected to SDS PAGE followed by western blot with Catalog No:114906(RPLP1 Antibody) at dilution of 1:1000



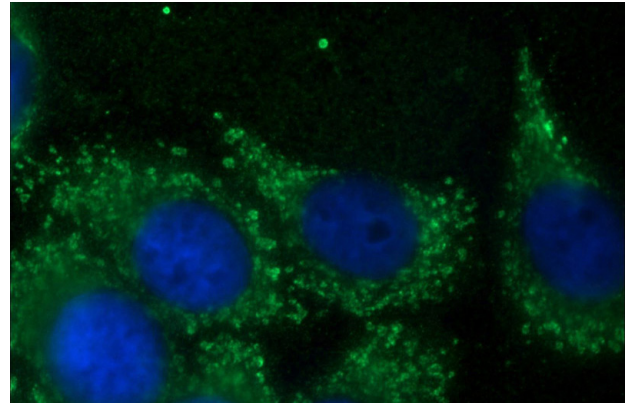
Immunohistochemistry of paraffin-embedded human colon tissue slide using Catalog No:114906(RPLP1 Antibody) at dilution of 1:50 (under 40x lens)

RPLP1 antibody

Catalog Number: 114906



Immunohistochemistry of paraffin-embedded human kidney tissue slide using Catalog No:114906(RPLP1 Antibody) at dilution of 1:50 (under 40x lens)



Immunofluorescent analysis of HepG2 cells using Catalog No:114906(RPLP1 Antibody) at dilution of 1:50 and Alexa Fluor 488-conjugated AffiniPure Goat Anti-Rabbit IgG(H+L)