

RPL7L1 antibody

Catalog Number: 114901

Product name

RPL7L1 antibody

IHC: 1:20-1:200

IF: 1:10-1:100

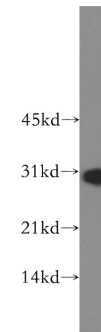
Specificity

human, mouse, rat; other species not tested.

Validations

Antibody description

RPL7L1 Rabbit Polyclonal antibody. Positive IF detected in MCF-7. Positive IHC detected in human liver cancer. Positive WB detected in HepG2 cells, HeLa cells, NIH/3T3 cells. Observed molecular weight by Western-blot: 29kd



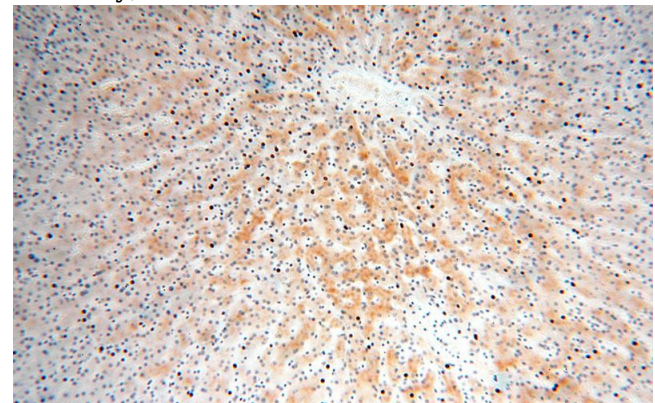
Preparation

This antibody was obtained by immunization of RPL7L1 recombinant protein (Accession Number: BC058020). Purification method: Antigen affinity purified.

HepG2 cells were subjected to SDS PAGE followed by western blot with Catalog No:114901(RPL7L1 antibody) at dilution of 1:1000

Formulation

PBS with 0.02% sodium azide and 50% glycerol pH 7.3.



Storage

Store at -20°C. DO NOT ALIQUOT

Clonality

Polyclonal

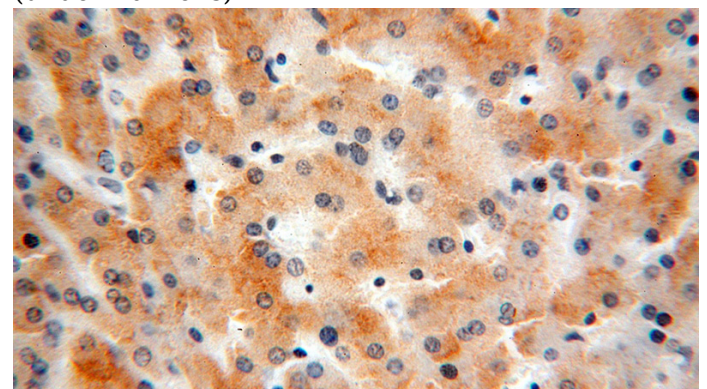
Immunohistochemical of paraffin-embedded human liver cancer using Catalog No:114901(RPL7L1 antibody) at dilution of 1:200 (under 10x lens)

Ig Type

Rabbit IgG

Applications

ELISA, WB, IHC, IF



Dilutions

Recommended Dilution:

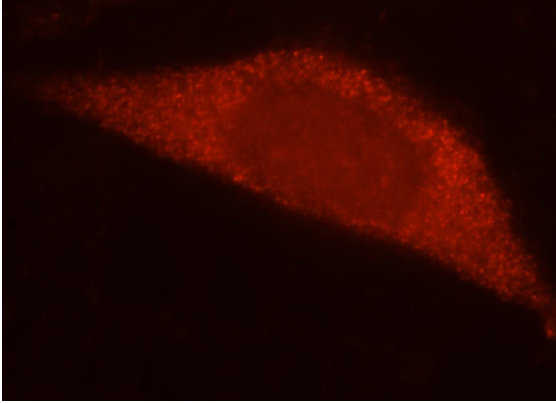
WB: 1:1000-1:10000

Immunohistochemical of paraffin-embedded

RPL7L1 antibody

Catalog Number: 114901

human liver cancer using Catalog
No:114901(RPL7L1 antibody) at dilution of 1:200
(under 40x lens)



Immunofluorescent analysis of MCF-7 cells, using
RPL7L1 antibody Catalog No:114901 at 1:25
dillution and Rhodamine-labeled goat anti-rabbit
IgG (red).