

RPL7 antibody

Catalog Number: 114899

Product name

RPL7 antibody

IP: 1:500-1:5000

IHC: 1:20-1:200

Specificity

Human, Mouse, Rat; other species not tested.

Antibody description

RPL7 Rabbit Polyclonal antibody. Positive IHC detected in human skin cancer tissue. Positive WB detected in HEK-293 cells, mouse kidney tissue. Positive IP detected in HEK-293 cells. Observed molecular weight by Western-blot: 29-30 kDa

Preparation

This antibody was obtained by immunization of RPL7 recombinant protein (Accession Number: NM_000971). Purification method: Antigen affinity purified.

Formulation

PBS with 0.02% sodium azide and 50% glycerol pH 7.3.

Storage

Store at -20°C. DO NOT ALIQUOT

Clonality

Polyclonal

Ig Type

Rabbit IgG

Applications

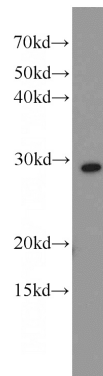
ELISA, WB, IHC, IP

Dilutions

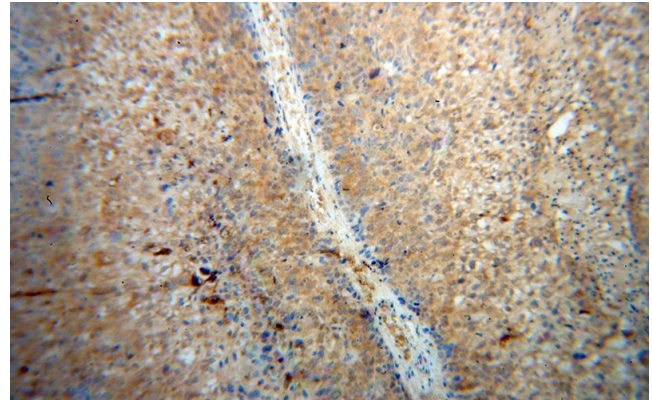
Recommended Dilution:

WB: 1:500-1:5000

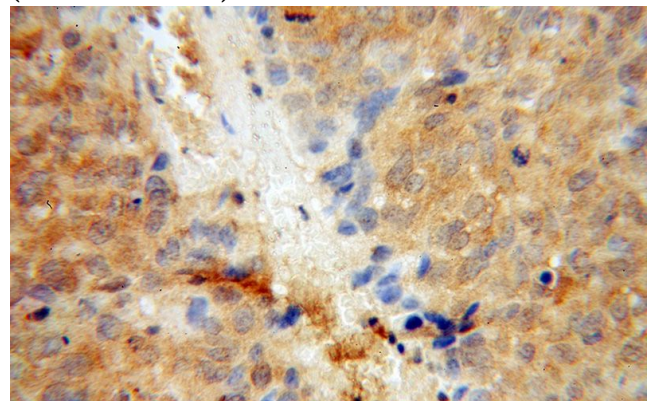
Validations



HEK-293 cells were subjected to SDS PAGE followed by western blot with Catalog No:114899(RPL7 antibody) at dilution of 1:1500



Immunohistochemical of paraffin-embedded human skin cancer using Catalog No:114899(RPL7 antibody) at dilution of 1:100 (under 10x lens)



Immunohistochemical of paraffin-embedded

RPL7 antibody

Catalog Number: 114899

human skin cancer using Catalog No:114899(RPL7 antibody) at dilution of 1:100 (under 40x lens)

IP Result of anti-RPL7 (IP:Catalog No:114899, 3ug; Detection:Catalog No:114899 1:1000) with HEK-293 cells lysate 880ug.

