

# RPL39 antibody

Catalog Number: 114895

## Product name

RPL39 antibody

IHC: 1:20-1:200

IF: 1:50-1:500

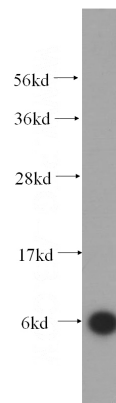
## Specificity

Human, Mouse, Rat; other species not tested.

## Antibody description

RPL39 Rabbit Polyclonal antibody. Positive WB detected in HepG2 cells, human liver tissue. Positive IHC detected in human liver cancer tissue. Positive IF detected in HepG2 cells. Observed molecular weight by Western-blot: 6 kDa

## Validations



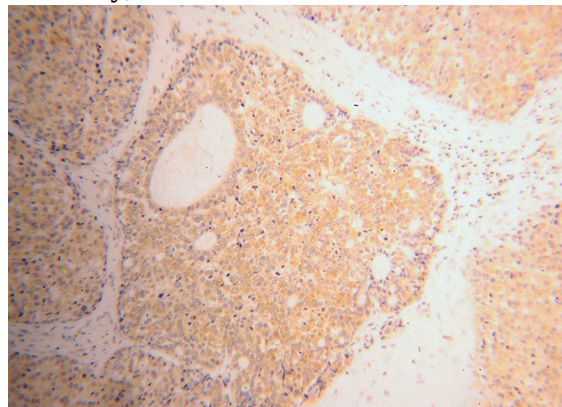
## Preparation

This antibody was obtained by immunization of RPL39 recombinant protein (Accession Number: NM\_001000). Purification method: Antigen affinity purified.

HepG2 cells were subjected to SDS PAGE followed by western blot with Catalog No:114895(RPL39 antibody) at dilution of 1:300

## Formulation

PBS with 0.02% sodium azide and 50% glycerol pH 7.3.



## Storage

Store at -20°C. DO NOT ALIQUOT

## Clonality

Polyclonal

Immunohistochemical of paraffin-embedded human liver cancer using Catalog No:114895(RPL39 antibody) at dilution of 1:100 (under 10x lens)

## Ig Type

Rabbit IgG

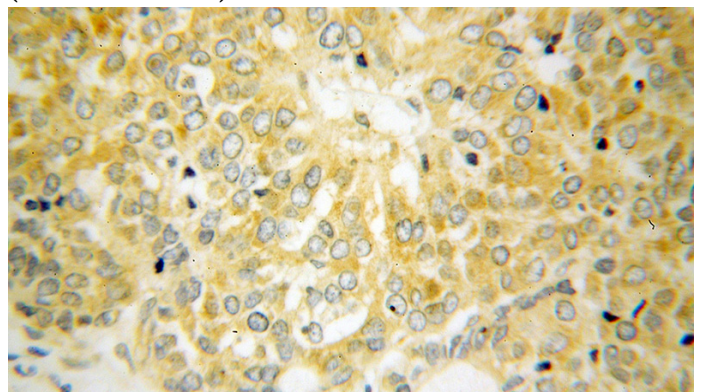
## Applications

ELISA, WB, IHC, IF

## Dilutions

Recommended Dilution:

WB: 1:500-1:5000



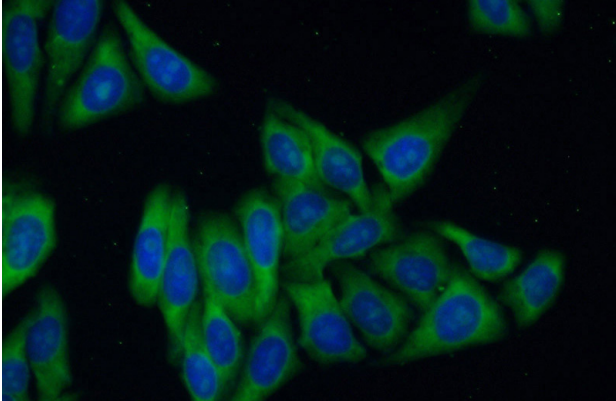
Immunohistochemical of paraffin-embedded

# RPL39 antibody

Catalog Number: 114895

---

human liver cancer using Catalog  
No:114895(RPL39 antibody) at dilution of 1:100  
(under 40x lens)



Immunofluorescent analysis of (10%  
Formaldehyde) fixed HepG2 cells using Catalog  
No:114895(RPL39 Antibody) at dilution of 1:50  
and Alexa Fluor 488-conjugated AffiniPure Goat  
Anti-Rabbit IgG(H+L)