

RPL36AL antibody

Catalog Number: 114892

Product name

RPL36AL antibody

Specificity

Human; other species not tested.

Antibody description

RPL36AL Rabbit Polyclonal antibody. Positive IHC detected in human breast cancer tissue, human liver cancer tissue.

Preparation

This antibody was obtained by immunization of RPL36AL recombinant protein (Accession Number: NM_001001). Purification method: Antigen affinity purified.

Formulation

PBS with 0.1% sodium azide and 50% glycerol pH 7.3.

Storage

Store at -20°C. DO NOT ALIQUOT

Clonality

Polyclonal

Ig Type

Rabbit IgG

Applications

ELISA, IHC

Dilutions

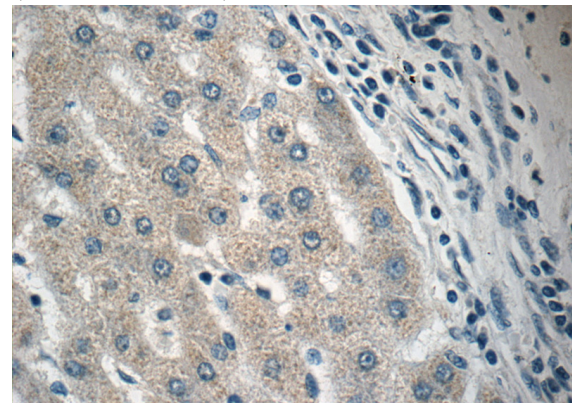
Recommended Dilution:

IHC: 1:20-1:200

Validations



Immunohistochemistry of paraffin-embedded human breast cancer tissue slide using Catalog No:114892(RPL36AL Antibody) at dilution of 1:50 (under 40x lens)



Immunohistochemistry of paraffin-embedded human liver cancer tissue slide using Catalog No:114892(RPL36AL Antibody) at dilution of 1:50 (under 40x lens)